

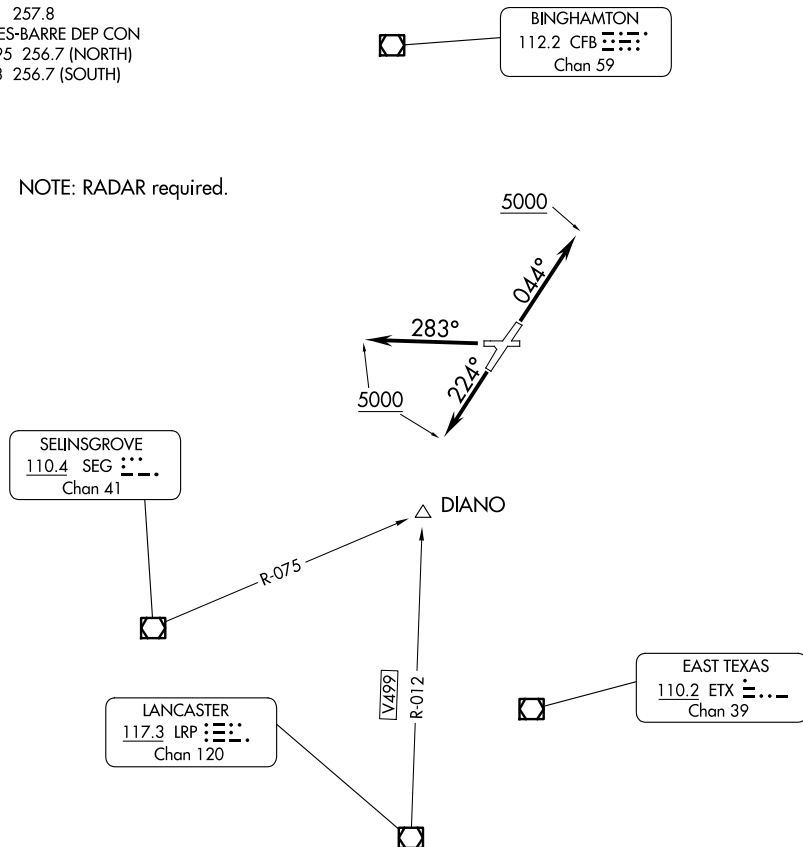
WILKES-BARRE/SCRANTON INTL (A VP)
WILKES-BARRE/SCRANTON, PENNSYLVANIA

SCRANTON EIGHT DEPARTURE

ATIS
 135.75
 GND CON
 121.9
 WILKES-BARRE TOWER
 120.1 257.8
 WILKES-BARRE DEP CON
 120.95 256.7 (NORTH)
 126.3 256.7 (SOUTH)

TOP ALTITUDE:
5000

NOTE: RADAR required.



TAKEOFF MINIMUMS:

Rwy 10: NA - Obstacles.

Rwy 4: Standard with minimum climb of 400' per NM to 2700.

Rwy 22: Standard with minimum climb of 290' per NM to 3100.

Rwy 28: Standard with minimum climb of 270' per NM to 2100.

NOTE: Chart not to scale.

DEPARTURE ROUTE DESCRIPTION

TAKEOFF RUNWAY 4: Climb heading 044° to 5000, thence....

TAKEOFF RUNWAY 22: Climb heading 224° to 5000, thence....

TAKEOFF RUNWAY 28: Climb heading 283° to 5000, thence....

...expect radar vectors to assigned route/navaid/fix, expect filed altitude 10 minutes after departure.

SCRANTON EIGHT DEPARTURE

(AVP8.AVP) 16JUL20

WILKES-BARRE/SCRANTON, PENNSYLVANIA
WILKES-BARRE/SCRANTON INTL (AVP)

NE-4, 07 AUG 2025 to 04 SEP 2025