

LOC/DME	I-ZK	APP CRS	Rwy Idg	7502
109.9		222°	TDZE	933
Chan 36			Apt Elev	962

ILS or LOC RWY 22

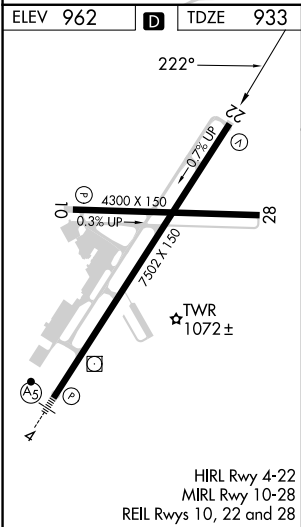
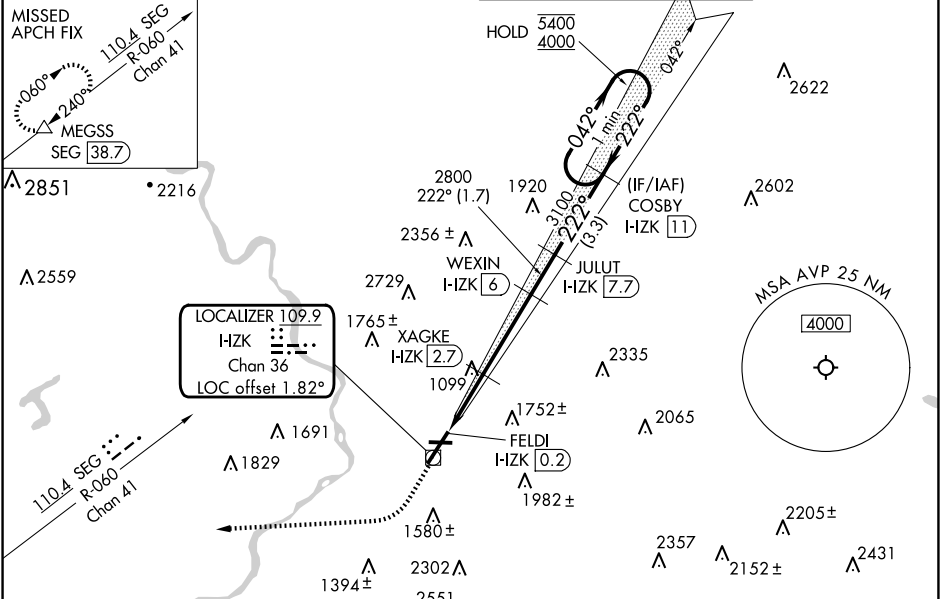
WILKES-BARRE/SCRANTON INTL (AVP)

RADAR required for procedure entry. DME required.

Circling NA for Cats C and D southeast of Rwy 4-22.
Circling Rwy 28 NA at night.

MISSED APPROACH: Climb to 1500 then climbing right turn to 4000 on heading 275° and SEG VOR/DME R-060 to MEGSS/ SEG 38.7 DME and hold.

ATIS 135.75	WILKES-BARRE APP CON 120.95 256.7 (280°-100°) 126.3 256.7 (101°-279°)	WILKES-BARRE TOWER 120.1 257.8	GND CON 121.9
-----------------------	-------------------------------------------------------------------------------------------	------------------------------------------	-------------------------



1500	4000	SEG R-060	MEGSS	VGSI and ILS glidepath not coincident (VGSI Angle 3.00/TCH 54).		One Minute Holding Pattern	
hdg 275°				JULUT I-ZK [7.7]	COSBY I-ZK [11]	042° → 5400 ← 222° 4000	
XAGKE I-ZK [2.7]		WEXIN I-ZK [6]		2800		GS 3.00° TCH 46	
FELDI I-ZK [0.2]				1740	2800		
1.4 NM		1.1	3.3 NM	1.7 NM	3.3 NM		
CATEGORY	A		B		C		D
S-ILS 22			1201/45		268 (300-7%)		
S-LOC 22	1400/55		467 (500-1)		1400-13% 467 (500-13%)		
CIRCLING	1840-11/4 878 (900-11/4)		1980-11/2 1018 (1100-11/2)		1980-3 1018 (1100-3)		2280-3 1318 (1400-3)