

WAAS CH <b>77835</b> <b>W33A</b>	APP CRS <b>331°</b>	Rwy Idg <b>4500</b> TDZE <b>41</b> Apt Elev <b>47</b>
--	------------------------	---

RNAV (GPS) RWY 33  
NANTUCKET MEML (ACK)

**⚠** Baro-VNAV NA when using Hyannis altimeter setting. For uncompensated Baro-VNAV systems, LNAV/VNAV NA below -11°C (13°F) or above 54°C (130°F). When local altimeter setting not received, use Hyannis altimeter setting: increase all DA 63 feet and all MDA 80 feet; increase LNAV Cats C and D visibility 1/8 mile and Circling Cat C visibility 1/4 mile. DME/DME RNP-0.3 NA.

**MISSED APPROACH:** Climb to 2500 direct CEROD and on track 260° to CLAMY and hold.

ATIS <b>127.5</b>	BOSTON APP CON <b>126.1 318.1</b>	NANTUCKET TOWER * <b>118.3 (CTAF) 0</b>	GND CON <b>132.5</b>	CLNC DEL <b>119.375</b>	UNICOM <b>122.95</b>
----------------------	--------------------------------------	--	-------------------------	----------------------------	-------------------------

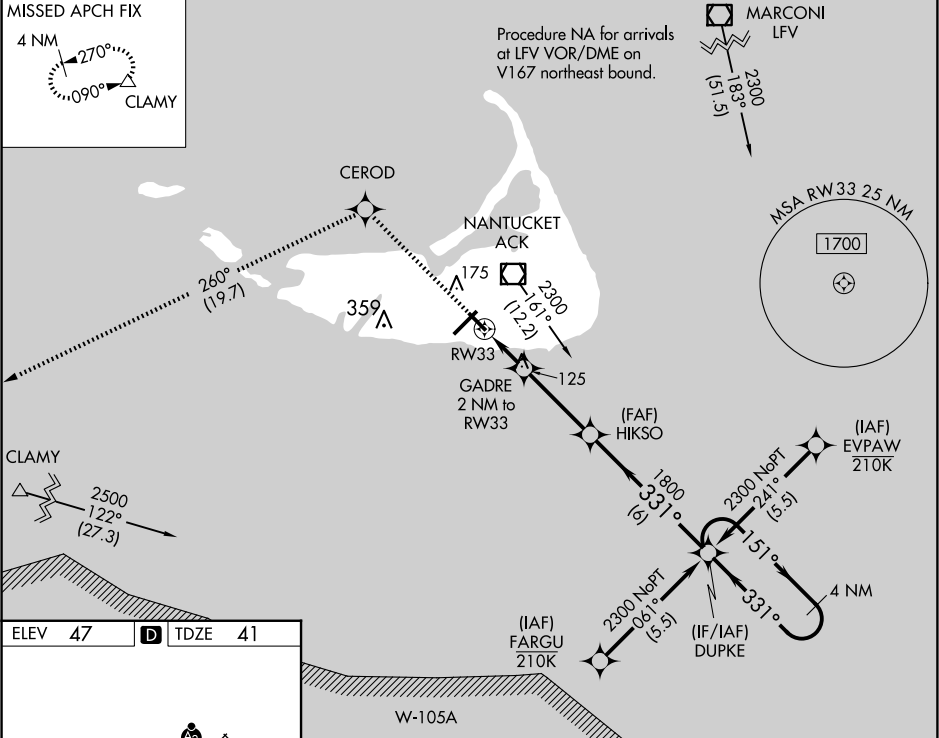
MISSED APCH FIX

4 NM

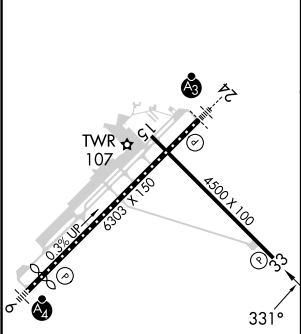
270°

090°

CLAMY



ELEV <b>47</b>	<b>D</b>	TDZE <b>41</b>
----------------	----------	----------------



TDZ/CL Rwy 24  
REIL Rwy 15 and 33  
MIRL Rwy 15-33 **0**  
HIRL Rwy 6-24 **0**

2500	CEROD	CLAMY	VGSI and RNAV glidepath not coincident (VGSI Angle 3.00°/TCH 45).	4 NM Holding Pattern
tr 260°				
* LNAV only.				
	GADRE 2 NM to RW33	HIKSO 1800	DUPKE	151° 2300
				GP 3.00° TCH 56
	RW33	*720	1800	
	2 NM	3.4 NM	6 NM	
CATEGORY	A	B	C	D
LPV DA		291-1	250 (300-1)	
LNAV/VNAV DA		301-1	260 (300-1)	
LNAV MDA		380-1	339 (400-1)	
<b>C</b> CIRCLING	480-1	500-1	720-2	1000-3
	433 (500-1)	453 (500-1)	673 (700-2)	953 (1000-3)