

|  |                        |   |
|--|------------------------|---|
| WAAS<br>CH <b>93612</b><br><b>W24A</b> | APP CRS<br><b>241°</b> | Rwy Ldg<br>TDZE <b>47</b><br>Apt Elev <b>47</b> |
|--|------------------------|---|

RNAV (GPS) RWY 24

NANTUCKET MEML (ACK)

RNP APCH - GPS.

▼

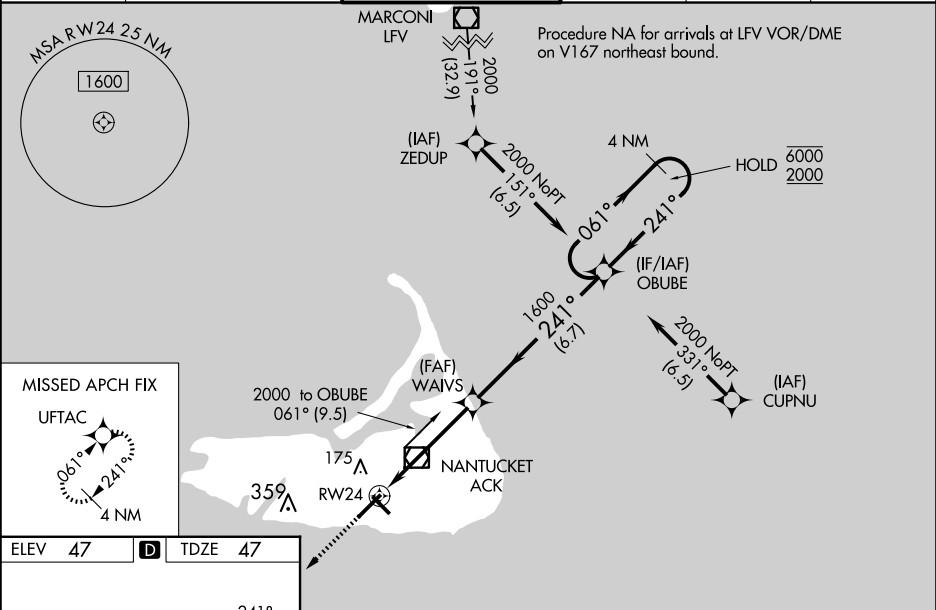
⚠

For uncompensated Baro-VNAV systems, LNAV/VNAV NA below -12°C or above 54°C. For inop ALS increase LNAV/VNAV all Cats visibility to RVR 4000 and LNAV Cats C/D visibility to 1½ SM. When local altimeter setting not received, use HYA altimeter setting and increase LPV DA to 310 feet and all visibilities to RVR 2000; increase LNAV/VNAV DA to 363 feet; increase all MDAs 80 feet and LNAV visibility Cat C/D to RVR 6000 and Circling visibility Cat C/D ¼ SM. Baro-VNAV and VDP NA when using HYA altimeter setting. For inop ALS when using HYA altimeter setting, increase LPV and LNAV/VNAV visibility all Cats to RVR 4500 and LNAV Cat C/D to 1½ SM.

SSALR

MISSED APPROACH:  
Climb to 2300 direct  
UFTAC and hold.

|                      |                                      |  |                         |                            |                         |
|----------------------|--------------------------------------|--|-------------------------|----------------------------|-------------------------|
| ATIS<br><b>127.5</b> | BOSTON APP CON<br><b>126.1 318.1</b> | NANTUCKET TOWER ★<br><b>118.3 (CTAF) 0</b> | GND CON<br><b>132.5</b> | CLNC DEL<br><b>119.375</b> | UNICOM<br><b>122.95</b> |
|----------------------|--------------------------------------|--|-------------------------|----------------------------|-------------------------|



ELEV 47

**D**

TDZE 47

TWR 107

0.23° UP

6303 x 150

4500 x 100

TDZ/CL Rwy 24

REIL Rwys 15 and 33

MIRL Rwy 15-33

HIRL Rwy 6-24

2300

UFTAC

4 NM Holding Pattern

OBUBE

061° → 6000

← 241° 2000

GP 3.00°

TCH 47

1.3 NM to RW24

WAIVS

1600

1.3 NM

3.4 NM

6.7 NM

|                   |                    |   |                    |                     |
|-------------------|--------------------|---|--------------------|---------------------|
| CATEGORY          | A                  | B | C                  | D                   |
| LPV DA            | 247/18 200 (200-½) |   |                    |                     |
| LNAV/VNAV DA      | 300/24 253 (300-½) |   |                    |                     |
| LNAV MDA          | 520/24 473 (500-½) |   | 520/50 473 (500-1) |                     |
| <b>C</b> CIRCLING | 520-1 473 (500-1)  |   | 720-2 673 (700-2)  | 720-2¼ 673 (700-2¼) |