

WAAS CH 97623 W15A	APP CRS 151°	Rwy Idg 4500 TDZE 45 Apt Elev 47
--	------------------------	---

RNAV (GPS) RWY 15

NANTUCKET MEML (ACK)

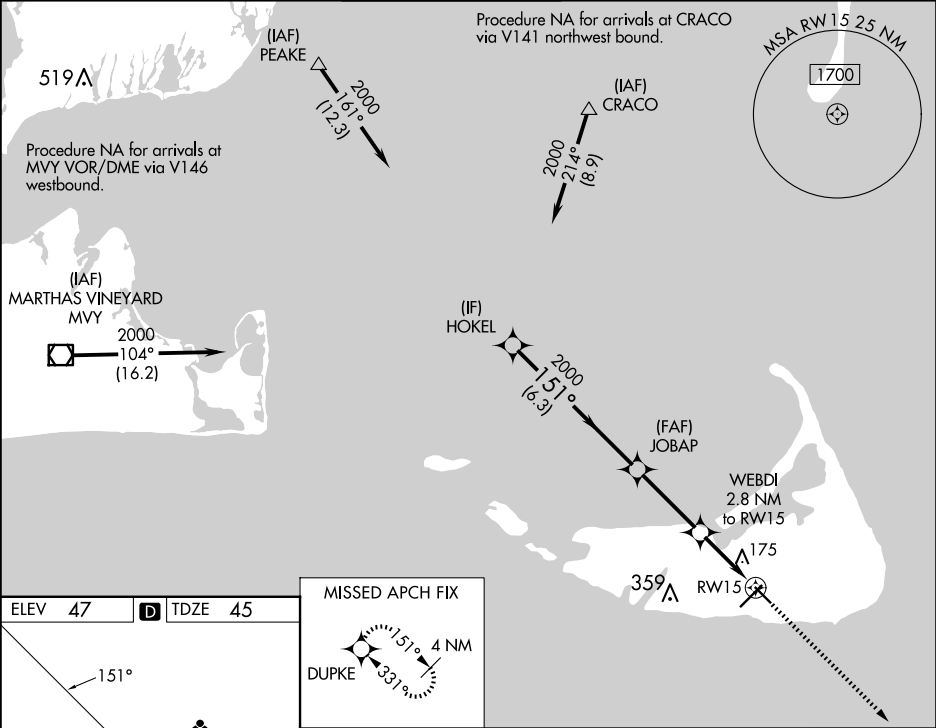
RNP APCH.

▼

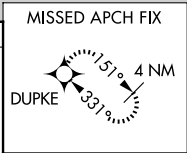
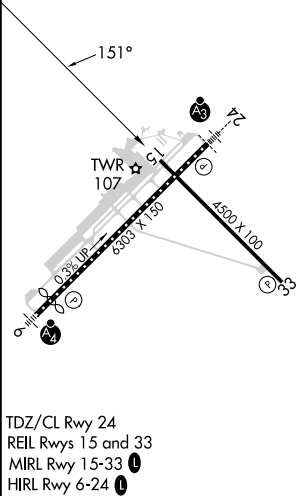
Baro-VNAV NA when using Hyannis altimeter setting. For uncompensated Baro-VNAV systems, LNAV/VNAV NA below -15°C or above 43°C. Rwy 15 helicopter visibility reduction below ¾ SM NA. When local altimeter setting not received, use Hyannis altimeter setting and increase LPV DA to 358, LNAV/VNAV DA to 543, and all MDA 80 feet; increase LNAV/VNAV all Cats and LNAV Cats C and D visibility ¼ mile.

MISSED APPROACH: Climb to 2300 direct DUPKE and hold.

ATIS 127.5	BOSTON APP CON 126.1 318.1	NANTUCKET TOWER ★ 118.3 (CTAF) 0	GND CON 132.5	CLNC DEL 119.375	UNICOM 122.95
----------------------	--------------------------------------	--	-------------------------	----------------------------	-------------------------



ELEV 47	D	TDZE 45
----------------	----------	----------------



	HOKEL	JOBAP	WEBDI 2.8 NM to RW15	2300 ↑ DUPKE
	2000	2000	*980	*LNAV only.
	GP 3.00° TCH 45	6.3 NM	3.2 NM	2.8 NM
CATEGORY	A	B	C	D
LPV DA	295-1 250 (300-1)			
LNAV/VNAV DA	480-1½ 435 (500-1½)			
LNAV MDA	440-1 395 (400-1)		440-1½ 395 (400-1½)	

NE-1, 07 AUG 2025 to 04 SEP 2025

NE-1, 07 AUG 2025 to 04 SEP 2025