

LOC/DME I-RNE	APP CRS	Rwy Idg
109.1	061°	5765
Chan 28		TDZE 38
		Apt Elev 47

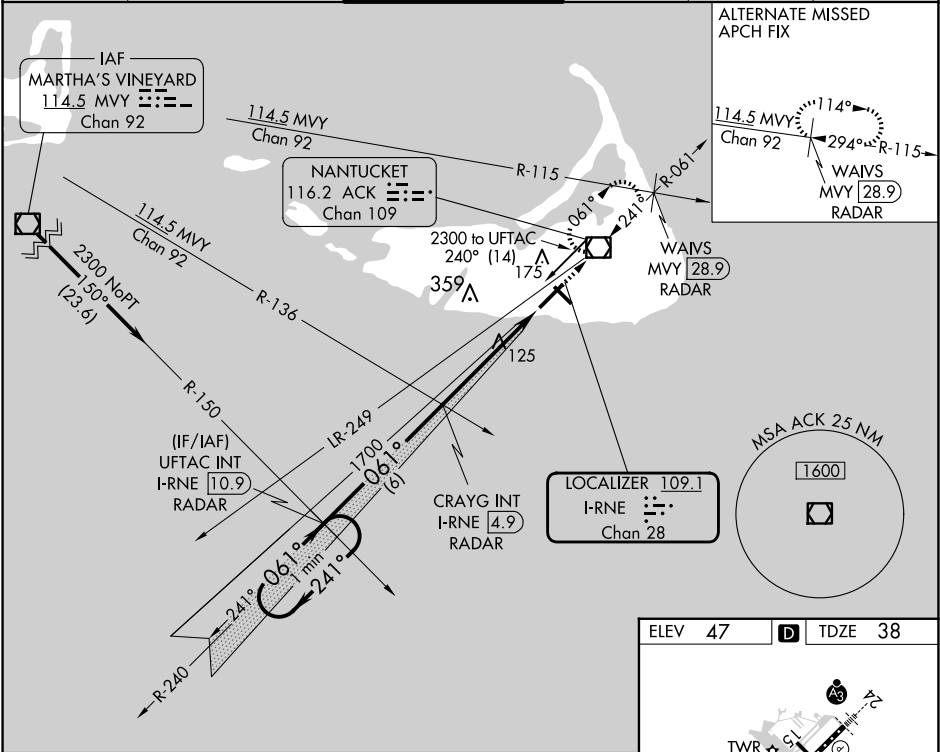
ILS or LOC RWY 6
NANTUCKET MEML (ACK)

When local altimeter not received, use Hyannis altimeter setting and increase S-ILS 6 DA to 301 and all MDA 80 feet; increase S-LOC 6 Cats C/D visibility to RVR 5000 and Circling Cats C/D visibility ¼ SM. Inop table does not apply to S-ILS 6. For inop ALS, increase S-LOC 6 Cat D visibility to RVR 5500. For inop ALS when using Hyannis altimeter setting, increase S-ILS 6 all Cats visibility to RVR 4500 and S-LOC 6 Cat D visibility to 1 ¼ SM. VDP NA when using Hyannis altimeter setting.

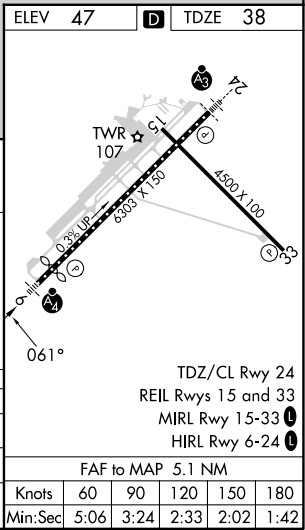
MALSF

MISSED APPROACH:
Climb to 1800 direct
ACK VOR/DME and
hold, continue climb-
in-hold to 1800.

ATIS 127.5	BOSTON APP CON 126.1 318.1	NANTUCKET TOWER ★ 118.3 (CTAF) 0	GND CON 132.5	CLNC DEL 119.375	UNICOM 122.95
----------------------	--------------------------------------	--	-------------------------	----------------------------	-------------------------



<div>One Minute Holding Pattern</div> <div>2300 ← 241° 061° →</div> <div>GS 3.00° TCH 57</div>	<div>UFTAC INT I-RNE 10.9 RADAR</div>		<div>CRAYG INT I-RNE 4.9 RADAR</div>		<div>*LOC only.</div>	<div>1800</div>	<div>ACK</div>
	<div>061°</div>		<div>1700</div>	<div>*I-RNE 0.7</div>	<div>I-RNE DME ANTENNA</div>	<div>I-RNE 0.2</div>	
	<div>1700</div>		<div>6 NM</div>	<div>4.2 NM</div>	<div>0.9 NM</div>		
CATEGORY	A	B	C	D			
S-ILS 6	238/40 200 (200-¾)						
S-LOC 6	380/40 342 (400-¾)						
CIRCLING	480-1 433 (500-1)	500-1 453 (500-1)	720-2 673 (700-2)	720-2¼ 673 (700-2¼)			



NE-1, 07 AUG 2025 to 04 SEP 2025

NE-1, 07 AUG 2025 to 04 SEP 2025