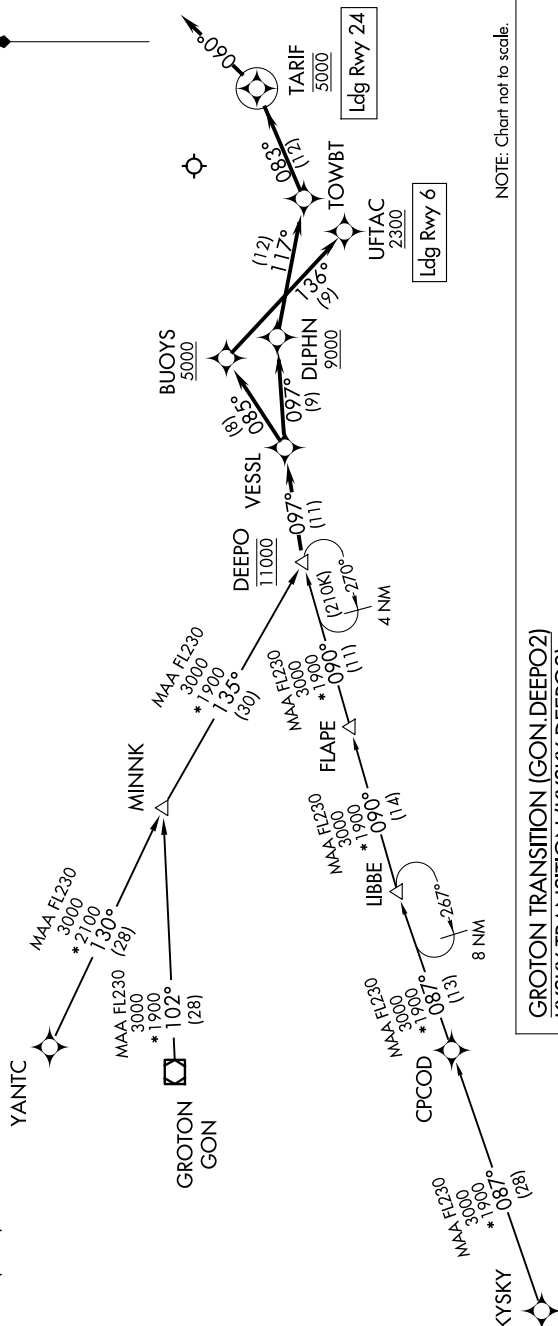


NANTUCKET MEML (ACK)
NANTUCKET, MASSACHUSETTS

NANTUCKET MEML (ACK)
NANTUCKET, MASSACHUSETTS

BOSTON APP CON
133.75 318.1
ATIS
127.5
NANTUCKET TOWER
118.3 (CTAF)



NOTE: Chart not to scale.

GROTON TRANSITION (GON.DEEPO2)
KYSKY TRANSITION (KYSKY.DEEPO2)
YANTC TRANSITION (YANTC.DEEPO2)

From DEEPO on track 097° to VESSL.

LANDING RUNWAY 6: From VESSL on track 085° to cross BUOYS at or above 5000, then on track 136° to cross UFTAC at or above 2300. Expect ILS or LOC RWY 6 approach.

NE-1, 07 AUG 2025 to 04 SEP 2025

DEEPO TWO ARRIVAL (RNAV)
(DEEPO.DEEPO2) 17APR25

NANTUCKET, MASSACHUSETTS
NANTUCKET MEML (ACK)