

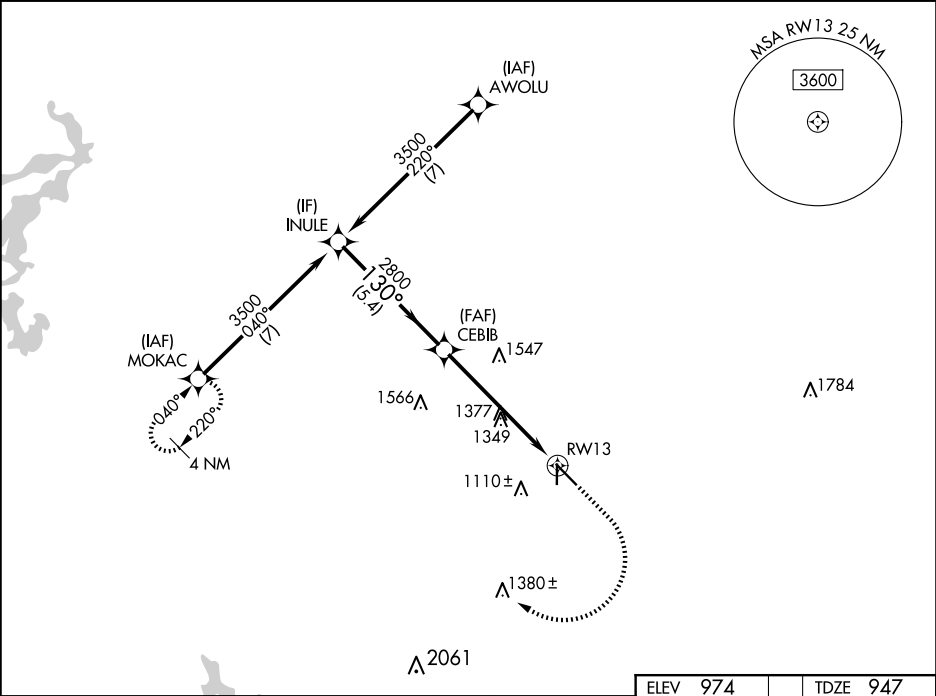
WAAS CH 65747 W13A	APP CRS 130°	Rwy Ldg 5696 TDZE 947 Apt Elev 974
--	------------------------	---

RNAV (GPS) RWY 13

MINERAL WELLS RGNL (MWL)

RNP APCH - GPS.	MISSED APPROACH: Climb to 1400 then climbing right turn to 3500 direct MOKAC and hold.
⚠ Circling Rwy 17, 35 NA at night. For uncompensated Baro-VNAV systems, LNAV/VNAV NA below -8°C or above 54°C. Rwy 13 helicopter visibility reduction below 1 SM NA.	

ASOS 135.075	FORT WORTH CENTER 127.0 360.6	UNICOM 122.725 (CTAF) 0
------------------------	---	-----------------------------------



INULE		CEBIB		RWY 13	
3500		2800		2800	
GP 3.00°		TCH 40		2 NM to RWY 13	
5.4 NM		3.8 NM		2 NM	
CATEGORY	A	B	C	D	
LPV DA	1197-1		250 (300-1)		
LNAV/VNAV DA	1198-1		251 (300-1)		
LNAV MDA	1600-1	653 (700-1)	1600-1 $\frac{7}{8}$	653 (700-1 $\frac{7}{8}$)	
CIRCLING	1600-1	626 (700-1)	1740-2 $\frac{1}{4}$ 766 (800-2 $\frac{1}{4}$)	1740-2 $\frac{1}{2}$ 766 (800-2 $\frac{1}{2}$)	

ELEV 974

TDZE 947

1400

3500

MOKAC

130°

10% UP

0.9% UP

4188 X 100

5992 X 100

35

989

51

MIRL Rwy 13-31 and 17-35 0