

(TIGRR.TIGRR4) 24137

TIGRR FOUR ARRIVAL (RNAV)

AL-655 (FAA)

CINCINNATI/NORTHERN KENTUCKY INTL (CVG)  
COVINGTON, KENTUCKY

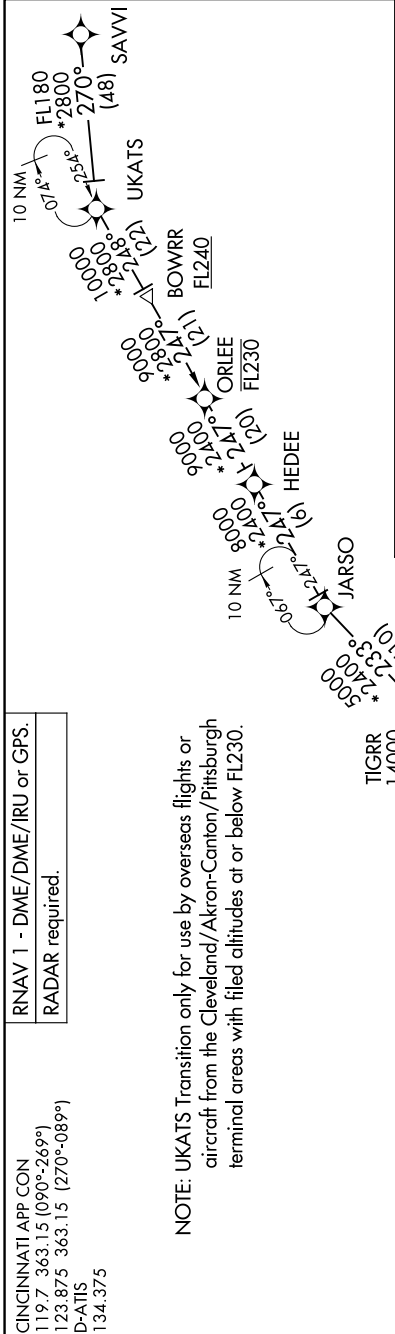
CINCINNATI APP CON	RNAV 1 - DME/DME/IRU or GPS.
119.7 363.15 (090°-269°)	RADAR required.
123.875 363.15 (270°-089°)	
D-ATIS	
134.375	

NOTE: UKATS Transition only for use by overseas flights or aircraft from the Cleveland/Akron-Canton/Pittsburgh terminal areas with filed altitudes at or below FL230.

CINCINNATI APP CON  
119.7 363.15 (090°-269°)  
123.875 363.15 (270°-089°)  
D-ATIS  
134.375

TIGRR FOUR ARRIVAL (RNAV)

(TIGRR.TIGRR4) 21MAR24



ARRIVAL ROUTE DESCRIPTION

**SAVVI TRANSITION (SAVVI.TIGRR4)**

**UKATS TRANSITION (UKATS.TIGRR4)**

From TIGRR on track 233° to CHARZ, then on track 236° to cross ETRYO between 9000 and 11000.

**LANDING RUNWAY 9:** From ETRYO on track 236° to cross BACAS between 8000 and 10000 and at 210K, then on track 250° to GUUTH, then on track 276° to cross IDULE at 6000 and at 210K, then on track 276°. Expect RADAR vectors to final approach course.

**LANDING RUNWAYS 18L/C/R:** From ETRYO on track 266° to cross CRSLY at 8000, then on track 266°. Expect RADAR vectors to final approach course.

**LANDING RUNWAY 27:** From ETRYO on track 199° to cross YEYUP at 8000, then on track 199°. Expect RADAR vectors to final approach course.

**LANDING RUNWAYS 36L/C/R:** From ETRYO on track 236° to cross BACAS between 8000 and 10000 and at 210K, then on track 184° to JANEG, then on track 186° to cross RUPPP at 6000 and at 210K, then on track 186°. Expect RADAR vectors to final approach course.

NOTE: Chart not to scale.

COVINGTON, KENTUCKY  
CINCINNATI/NORTHERN KENTUCKY INTL (CVG)