

WAAS CH 65709 W09A	APP CRS 096°	Rwy Ldg 11640 TDZE 883 Apt Elev 896
--	------------------------	--

RNAV (GPS) Y RWY 9

CINCINNATI/NORTHERN KENTUCKY INTL (CVG)

RNP APCH - GPS.

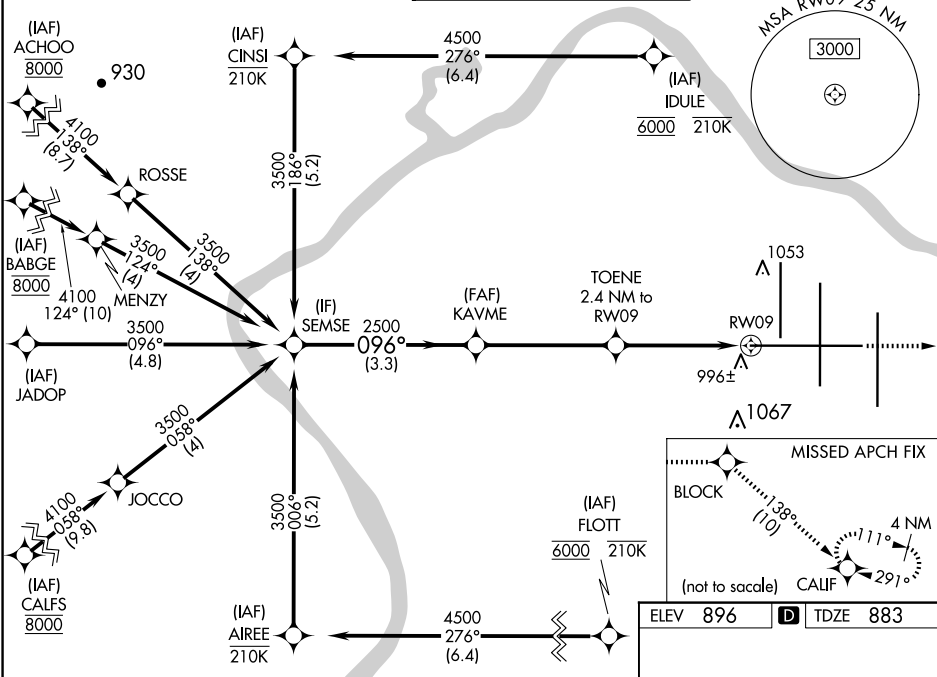
For uncompensated Baro-VNAV systems, LNAV/VNAV NA below -14°C or above 54°C. For inop ALS, increase LNAV/VNAV all Cats visibility to RVR 5500 and LNAV Cat C and D visibility to RVR 5500.

MALSR



MISSED APPROACH: Climb to 3000 direct BLOCK and on track 138° to CALIF and hold.

D-ATIS		CINCINNATI APP CON	CINCINNATI TOWER	GND CON	CLNC DEL	CPDLC
ARR	DEP	119.7 363.15 (090°-269°) 123.875 363.15 (270°-089°)	118.975 360.85 (RWY 18L/36R) 118.3 (RWYS 18C/36C, 09/27) 133.325 (RWY 18R/36L)	121.7	127.175	
134.375	135.3					



VGSI and RNAV glidepath not coincident (VGSI Angle 3.00/TCH 70).					3000	BLOCK	tr 138°	CALIF
SEMSE					3500	2500	TOENE 2.4 NM to RWY 09	
GP 3.00° TCH 52					3500	2500	1700	
					3.3 NM	2.5 NM	1.4 NM	1 NM
CATEGORY	A	B	C	D				
LPV DA	1083/18 200 (200-½)							
LNAV/VNAV DA	1260/35 377 (400-¾)							
LNAV MDA	1260/24	377 (400-½)	1260/35	377 (400-¾)				
CIRCLING	1460-1	564 (600-1)	1560-1¾ 664 (700-¾)	1560-2 664 (700-2)				

