

COVINGTON, KENTUCKY

AL-655 (FAA)

25163

WAAS CH 86809 W27A	APP CRS 276°	Rwy Ldg 12000 TDZE 875 Apt Elev 896
--	------------------------	--

RNAV (GPS) Y RWY 27

CINCINNATI/NORTHERN KENTUCKY INTL (CVG)

RNP APCH - GPS.

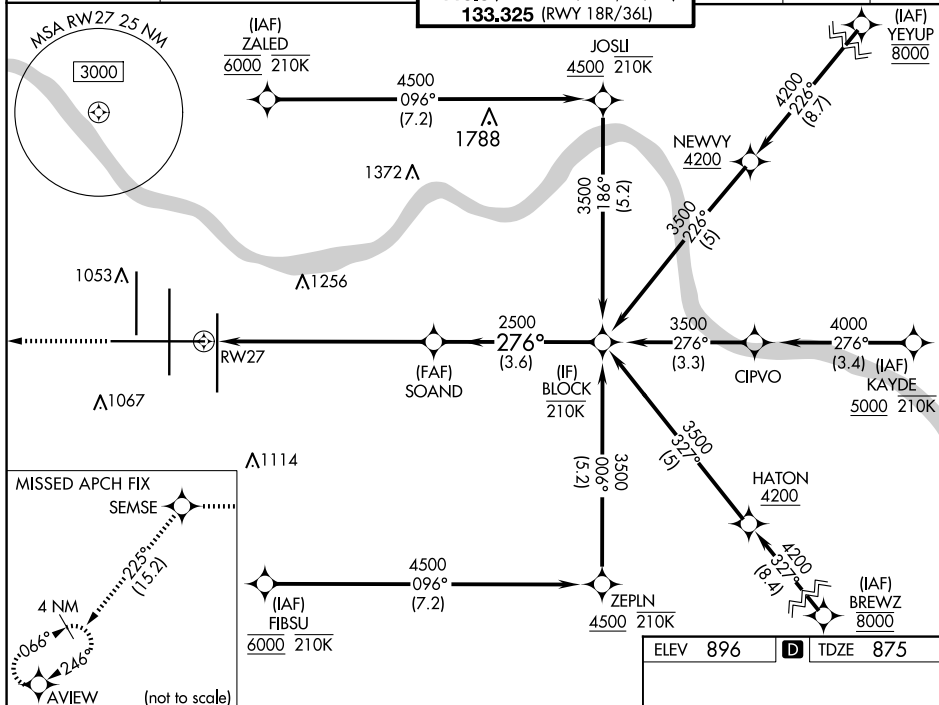
T For uncompensated Baro-VNAV systems, LNAV/VNAV NA below -14°C or above 54°C. *RVR 1800 authorized with use of FD or AP or HUD to DA.

MALS



MISSED APPROACH: Climb to 3000
direct SEMSE then on track 225° to
AVIEW and hold.

D-ATIS		CINCINNATI APP CON		CINCINNATI TOWER		GND CON	CLNC DEL	CPDLC
ARR	DEP	119.7	363.15 (090°-269°)	118.975	360.85 (RWY 18L/36R)	121.7	127.175	
134.375	135.3	123.875	363.15 (270°-089°)	118.3	(RWYS 18C/36C, 09/27)			
				133.325	(RWY 18R/36L)			



3000
↑
SEMSE
fr 225°
AVIEW

VGSI and RNAV glidepath not coincident
(VGSI Angle 3.00°/TCH 67°).

BLOCK

SOAND

2500

276°

3500

GP 3.00°
TCH 55

RW27

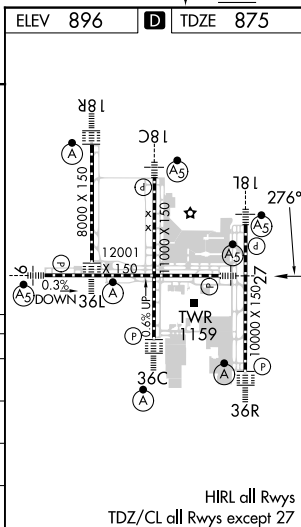
1.5 NM to RW27

1.5 NM

3.4 NM

3.6 NM

CATEGORY	A	B	C	D
LPV DA*	1075/24 200 (200-½)			
RNAV/ VNAV DA	1320/45 445 (500-¾)			
RNAV MDA	1420/24 545 (600-½)	1420/60 545 (600-¼)		
C CIRCLING	1460-1 564 (600-1)	1560-1¾ 664 (700-1¾)		1560-2 664 (700-2)



COVINGTON, KENTUCKY

Amdt 1 12JUN25

CINCINNATI/NORTHERN KENTUCKY INTL (CVG)

39°03'N-84°40'W

RNAV (GPS) Y RWY 27

SE-1, 07 AUG 2025 to 04 SEP 2025

SE-1, 07 AUG 2025 to 04 SEP 2025