

WAAS CH 58099 W18D	APP CRS 186°	Rwy Ldg TDZE 868 Apt Elev 896
--	------------------------	---

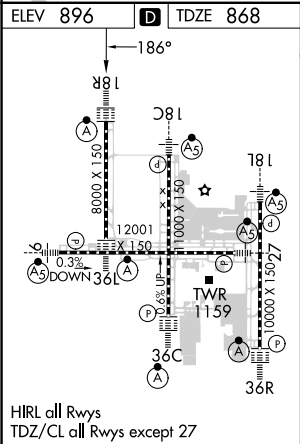
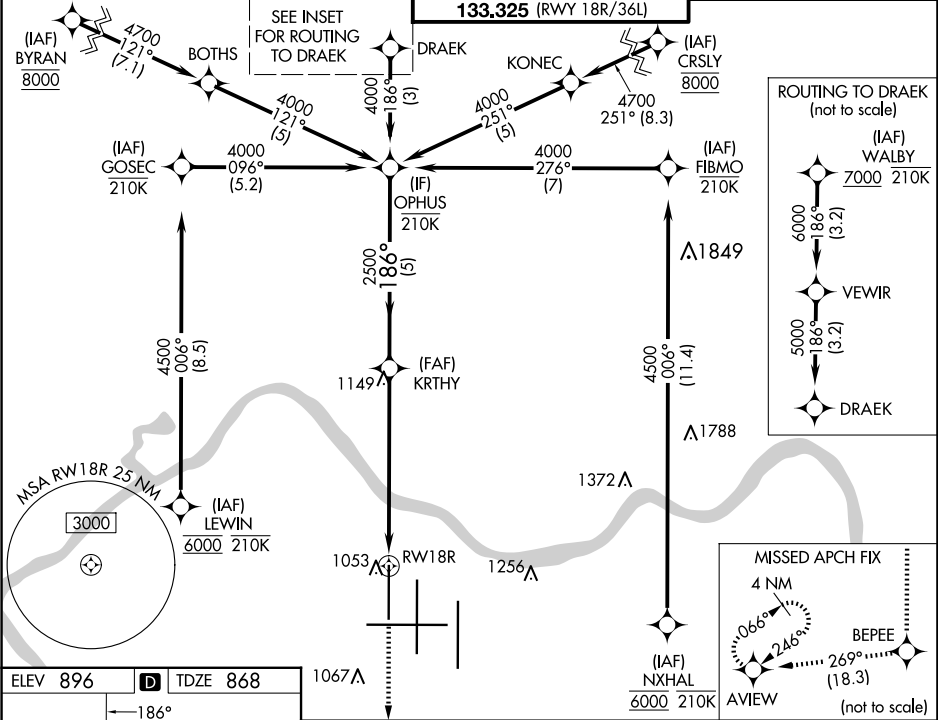
RNAV (GPS) Y RWY 18R

CINCINNATI/NORTHERN KENTUCKY INTL (CVG)

RNP APCH - GPS.
For uncompensated Baro-VNAV systems, LNAV/VNAV NA below -14°C or above 54°C. Simultaneous approach authorized with Rwy 18L/C. LNAV procedure NA during simultaneous operations. Use of FD or AP required during simultaneous operations. For inop ALS, increase LNAV/VNAV all Cats visibility to RVR 5500 and LNAV Cat C/D visibility to 1 3/8 SM.

ALSF-2
MISSED APPROACH: Climb to 3000 direct BEPEE and on track 269° to AVIEW and hold.

D-ATIS ARR 134.375 DEP 135.3	CINCINNATI APP CON 119.7 363.15 (090°-269°) 123.875 363.15 (270°-089°)	CINCINNATI TOWER 118.975 360.85 (RWY 18L/36R) 118.3 (RWYS 18C/36C, 09/27) 133.325 (RWY 18R/36L)	GND CON 121.7	CLNC DEL 127.175	CPDLC
---	--	---	-------------------------	----------------------------	-------



3000	BEPEE	tr 269°	AVIEW	
<p>The diagram shows a profile view of an approach. At the top left, there are three symbols: a vertical arrow pointing up labeled '3000', a four-pointed star labeled 'BEPEE', and a four-pointed star with a horizontal line through it labeled 'tr 269°'. To the right of these is a four-pointed star labeled 'AVIEW'. Below these symbols, a dashed line represents the approach path, starting from the left and curving upwards. A solid line represents the final approach segment, starting from a point labeled 'RW18R' and extending to the right. Along this segment, there are two points: one labeled '1.4 NM to RW18R' with a downward arrow, and another labeled '2500' with a downward arrow. The segment continues to a point labeled '2500' with a downward arrow, and then to a point labeled '4000' with a downward arrow. The angle between the segment from '2500' to '4000' and the horizontal is labeled '186°'. The distance from 'RW18R' to the first '2500' point is labeled '1.4 NM', and the distance from the first '2500' point to the '4000' point is labeled '3.6 NM'. The total distance from 'RW18R' to '4000' is labeled '5 NM'. The diagram also shows a point labeled 'KRTHY' and a point labeled 'OPHUS'.</p>				
CATEGORY	A	B	C	D
LPV DA	1068/18		200 (200-½)	
LNAV/VNAV DA	1214/30		346 (400-¾)	
LNAV MDA	1360/24	492 (500-½)	1360/50	492 (500-1)
CIRCLING	1460-1	564 (600-1)	1560-1¾ 664 (700-1¾)	1560-2 664 (700-2)