

WAAS CH 40103 W18A	APP CRS 186°	Rwy Ldg 10000 TDZE 889 Apt Elev 896
--	------------------------	--

RNAV (GPS) Y RWY 18L

CINCINNATI/NORTHERN KENTUCKY INTL (CVG)

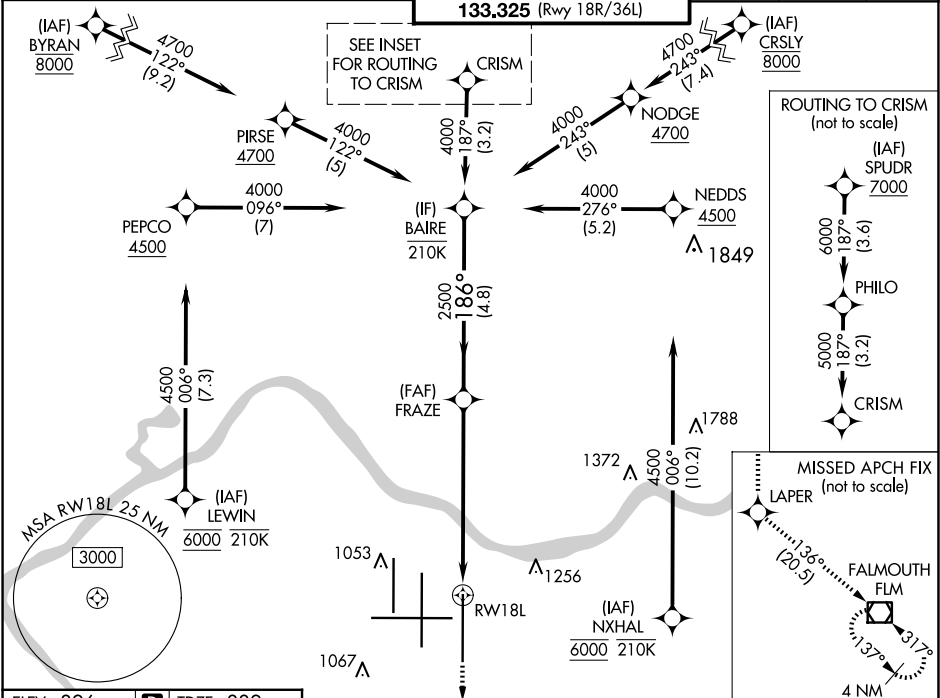
RNP APCH - GPS.

▼ For uncompensated Baro-VNAV systems, LNAV/VNAV NA below -14°C or above 54°C. Simultaneous approach authorized. LNAV procedure NA during simultaneous operations. Use of FD or AP required during simultaneous operations. For inop ALS, increase LNAV/VNAV all Cats and LNAV Cat C and D visibility to 1½ SM.

MALSR

MISSED APPROACH: Climb to 3000 direct LAPER and on track 136° to FLM VOR/DME and hold.

D-ATIS ARR 134.375 DEP 135.3	CINCINNATI APP CON 119.7 363.15 (090°-269°) 123.875 363.15 (270°-089°)	CINCINNATI TOWER 118.975 360.85 (Rwy 18L/36R) 118.3 (Rwys 18C/36C, 9/27) 133.325 (Rwy 18R/36L)	GND CON 121.7	CLNC DEL 127.175	CPDLC
--	--	--	-------------------------	----------------------------	-------



ELEV 896

D

TDZE 889

3000

LAPER

tr 136°

FLM

VGSI and RNAV glidepath not coincident (VGSI Angle 3.00/TCH 71).

BAIRE 4000

1.3 NM to RWY 18L

2500

GP 3.00° TCH 55

CATEGORY	A	B	C	D
LPV DA	1089/18 200 (200-½)			
LNAV/VNAV DA	1360/50 471 (500-1)			
LNAV MDA	1360/24 471 (500-½)	1360/50 471 (500-1)		
C CIRCLING	1460-1 564 (600-1)	1560-1¾ 664 (700-1¾)	1560-2 664 (700-2)	

HIRL all Rwys
TDZ/CL all Rwys except 27