

APP CRS
006°

Rwy Ldg
10000

TDZE
896

Apt Elev
896

RNAV (RNP) Z RWY 36R

CINCINNATI/NORTHERN KENTUCKY INTL (CVG)

RNP AR APCH - GPS. Authorization required. From ALALE, BIBWY, LINOL, or YOTUL: RF.

For uncompensated Baro-VNAV systems, procedure NA below -14°C or above 54°C. Simultaneous approach authorized. For inop ALS, increase RNP 0.16 all Cats visibility to RVR 5500 and RNP 0.30 all Cats visibility to RVR 6000.

ALSf-2

MISSED APPROACH: Climb to 3000 direct BAIRE and on track 083° to MOAKS and hold.

D-ATIS
ARR **134.375** DEP **135.3**

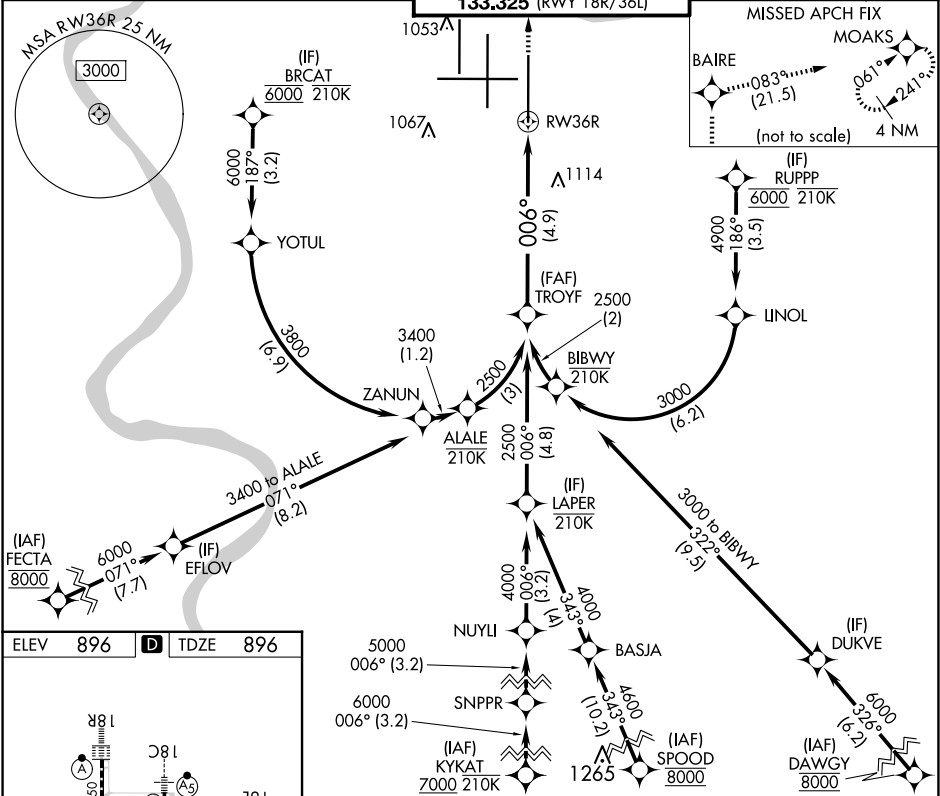
CINCINNATI APP CON
119.7 363.15 (090°-269°)
123.875 363.15 (270°-089°)

CINCINNATI TOWER
118.975 360.85 (RWY 18L/36R)
118.3 (RWYS 18C/36C, 09/27)
133.325 (RWY 18R/36L)

GND CON
121.7

CLNC DEL
127.175

CPDLC



ELEV 896 **D** TDZE 896

HIRL all Rwys
TDZ/CL all Rwys except 27

VGSI and RNAV glidepath not coincident (VGSI Angle 3.00/TCH 70).

TROYF 2500

GP 3.00° TCH 55

3000 BAIRE tr 083° MOAKS

See planview for multiple IF locations.

2500 006° RW36R

4.9 NM

CATEGORY	A	B	C	D
RNP 0.16 DA		1242/30	346 (400-¾)	
RNP 0.30 DA		1308/40	412 (500-¾)	

AUTHORIZATION REQUIRED