

APP CRS	Rwy Ldg	8000
006°	TDZE	873
	Apt Elev	896

RNAV (RNP) Z RWY 36L  
CINCINNATI/NORTHERN KENTUCKY INTL (CVG)

RNP AR APCH - GPS. Authorization required. From OHMAN, PRODD, RCHRD, or TAVOE: RF.

ALSF-2

**MISSED APPROACH:** Climb to 3000 direct KRTHY and on track 329° to BATHY and hold.

**T** For uncompensated Baro-VNAV systems, procedure NA below -14°C or above 54°C. Simultaneous approach authorized.

D-ATIS		CINCINNATI APP CON
ARR	DEP	
<b>134.375</b>	<b>135.3</b>	<b>119.7 363.15</b> (090°-269°)
		<b>123.875 363.15</b> (270°-089°)

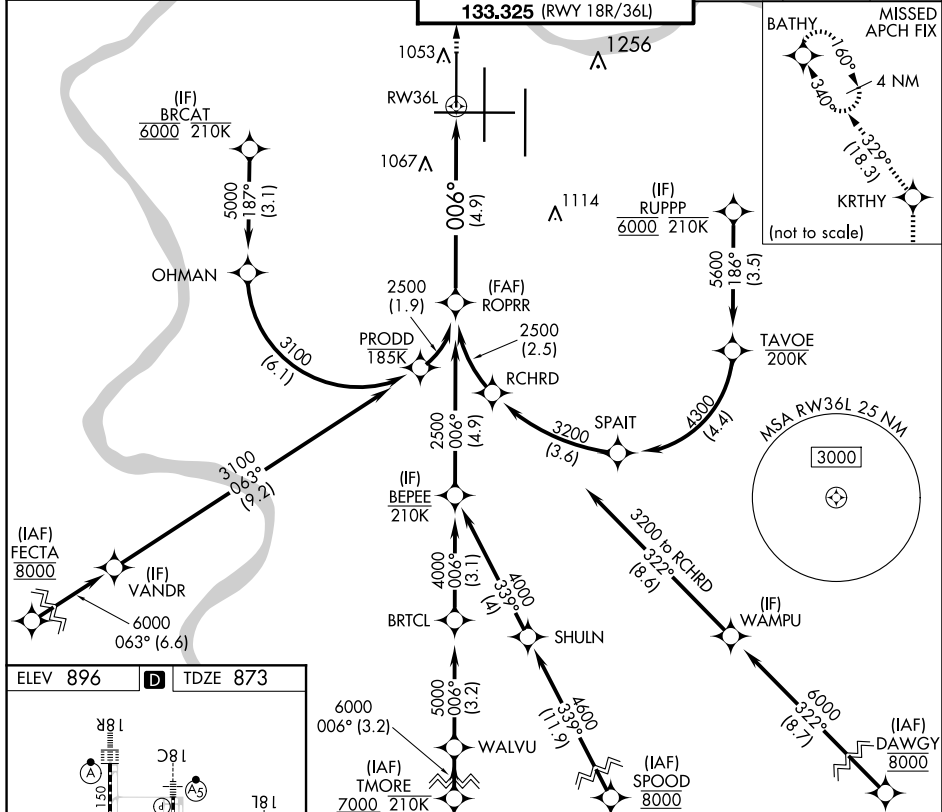
CINCINNATI TOWER  
**118.975 360.85** (RWY 18L/36R)  
**118.3** (RWYS 18C/36C, 09/27)  
**133.325** (RWY 18R/36L)

GND CO  
121.7

CLNC DEL  
**127.175**

CPDLC

BATHY MISSED  
APCH FIX



ELEV 896	<b>D</b>	TDZE 873
----------	----------	----------

See planview for multiple IF locations.

3000

RTHY

BATHY

tr 329°

2500

2500

006°

GP 3.00°  
TCH 55

4.9 NM

RW36L

CATEGORY	A	B	C	D
RNP 0.15 DA		1205/26	332 (400- $\frac{1}{2}$ )	
RNP 0.30 DA		1270/35	397 (400- $\frac{5}{8}$ )	

**AUTHORIZATION REQUIRED**