

APP CRS
276°

Rwy Ldg
TDZE
875

Apt Elev
896

RNAV (RNP) Z RWY 27

CINCINNATI/NORTHERN KENTUCKY INTL (CVG)

RNP AR APCH - GPS

For uncompensated Baro-VNAV systems, procedure NA below -14°C or above 54°C. For inop ALS, increase RNP 0.15 all Cats visibility to RVR 5500, increase RNP 0.3 all Cats visibility to 1 1/2 SM.

MALSR

MISSED APPROACH: Climb to 3000 direct SEMSE and on track 225° to AVIEW and hold.

D-ATIS
ARR
134.375

DEP
135.3

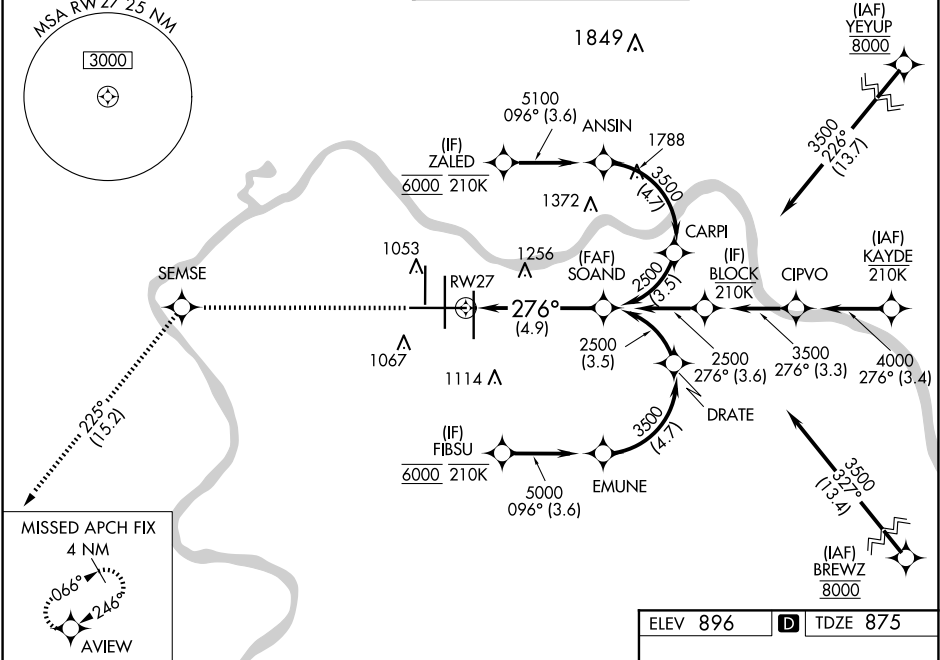
CINCINNATI APP CON
119.7 363.15 (090°-269°)
123.875 363.15 (270°-089°)

CINCINNATI TOWER
118.975 360.85 (RWY 18L/36R)
118.3 (RWYS 18C/36C, 09/27)
133.325 (RWY 18R/36L)

GND CON
121.7

CLNC DEL
127.175

CPDLC



ELEV 896

TDZE 875

CATEGORY	A	B	C	D
RNP 0.15 DA		1244/35	369 (400-%)	
RNP 0.23 DA		1260/35	385 (400-%)	
RNP 0.30 DA		1364/50	489 (500-1)	

AUTHORIZATION REQUIRED

