

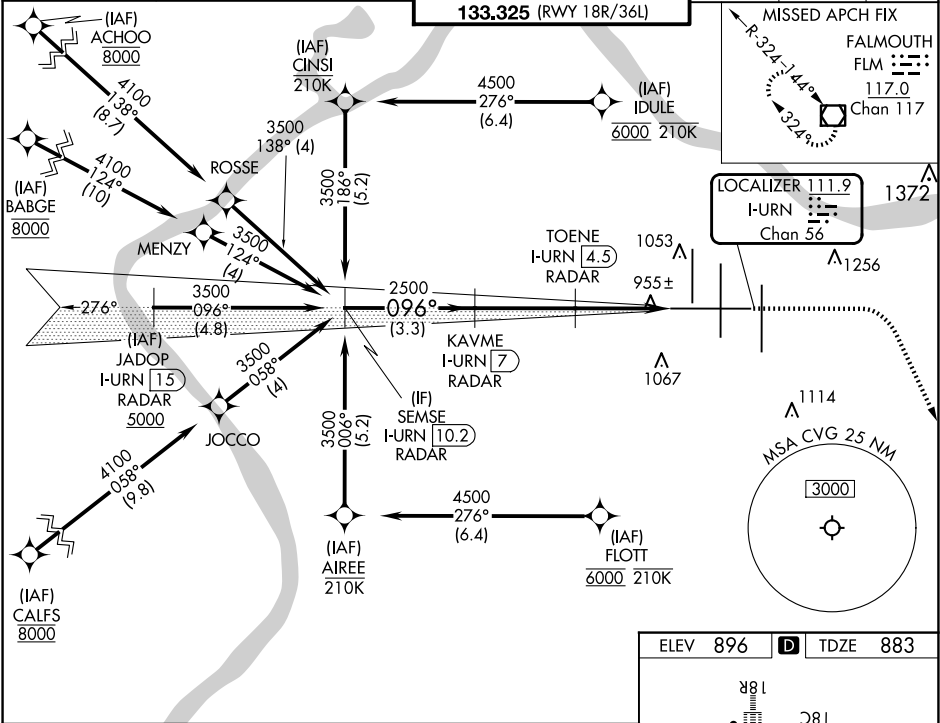
LOC/DME I-URN 111.9 Chan 56	APP CRS 096°	Rwy Ldg TDZE 883 Apt Elev 896
---	------------------------	---

ILS or LOC RWY 9

CINCINNATI/NORTHERN KENTUCKY INTL (CVG)

RNP APCH - GPS from ACHOO or AIREE or BABGE or CALFS or CINSI or FLOTT or IDULE.	MALSR	MISSED APPROACH: Climb to 2000 then climbing right turn to 3000 direct FLM VOR/DME and hold.
DME or RADAR required. RADAR required for procedure entry at JADOP.		

D-ATIS ARR 134.375 DEP 135.3	CINCINNATI APP CON 119.7 363.15 (090°-269°) 123.875 363.15 (270°-089°)	CINCINNATI TOWER 118.975 360.85 (RWY 18L/36R) 118.3 (RWYS 18C/36C, 09/27) 133.325 (RWY 18R/36L)	GND CON 121.7	CLNC DEL 127.175	CPDLC
---	--	---	-------------------------	----------------------------	-------



VGSI and ILS glidepath not coincident (VGSI Angle 3.00/TCH 70).		2000	3000	FLM
SEMSE I-URN 10.2 RADAR				
KAYME I-URN 7 RADAR				
TOENE I-URN 4.5 RADAR				
GS 3.00° TCH 52				
3500 096°				
2500 096°				
1700 096°				
3.3 NM		2.5 NM		
1.6 NM		0.8 NM		
CATEGORY	A	B	C	D
S-ILS 9	1083/18 200 (200-½)			
S-LOC 9	1220/24	337 (400-½)	1220/26	337 (400-½)
CIRCLING	1460-1	564 (600-1)	1560-1¾ 664 (700-1¾)	1560-2 664 (700-2)

ELEV 896	TDZE 883
HIRL all Rwy's TDZ/CL all Rwy's except 27	
FAF to MAP 4.9 NM	
Knots	60 90 120 150 180
Min:Seq	4:54 3:16 2:27 1:58 1:38