

LOC/DME I-EEI

110.35

Chan 40 (Y)

APP CRS

006°

Rwy Ldg

10000

TDZE

896

Apt Elev

896

ILS or LOC RWY 36R

CINCINNATI/NORTHERN KENTUCKY INTL (CVG)

RNP APCH - GPS. From BRCAT or RUPPP or FECTA or SPOOD or DAWGY.
DME or RADAR required. RADAR required for procedure entry at KYKAT.

ALSF-2

MISSED APPROACH: Climb to 1500 then climbing right turn to 4000 direct FLM VOR/DME and hold.

D-ATIS

ARR

134.375

DEP

135.3

CINCINNATI APP CON

119.7 363.15 (090°-269°)

123.875 363.15 (270°-089°)

CINCINNATI TOWER

118.975 360.85 (RWY 18L/36R)

118.3 (RWYS 09/27, 18C/36C)

133.325 (RWY 18R/36L)

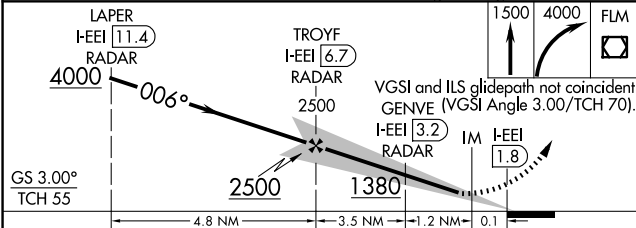
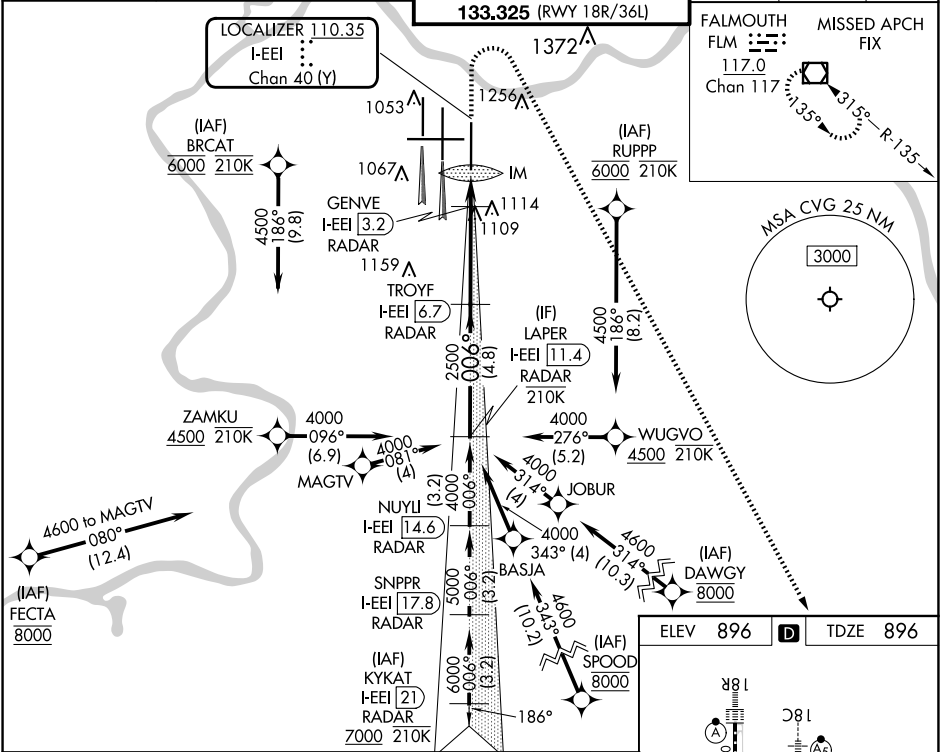
GND CON

121.7

CLNC DEL

127.175

CPDLC



CATEGORY	A	B	C	D
S-ILS 36R	1096/18 200 (200-½)			
S-LOC 36R	1360/24	464 (500-½)	1360/50	464 (500-1)
CIRCLING	1460-1	564 (600-1)	1560-1¾ 664 (700-1¾)	1560-2 664 (700-2)

ELEV 896

D

TDZE 896

HIRL all Rwy's

TDZ/CL all Rwy's except 27

FAF to MAP 4.9 NM

Knots	60	90	120	150	180
Min:Sec	4:54	3:16	2:27	1:58	1:38