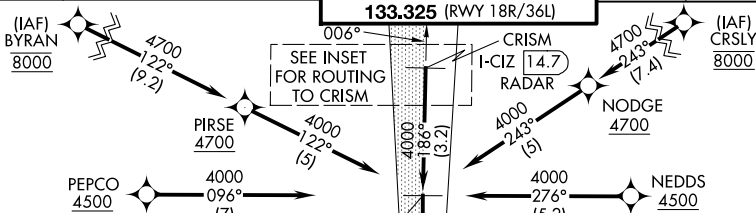


ILS or LOC RWY 18L
CINCINNATI/NORTHERN KENTUCKY INTL (CVG)

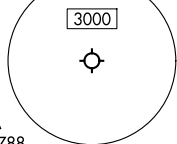
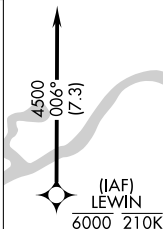
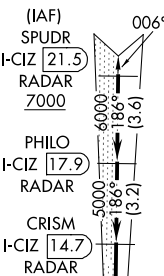
MISSED APPROACH: Climb to 1500 then climbing left turn to 3000 on heading 120° and FLM VOR/DME R-339 to FLM VOR/DME and hold.



CINCINNATI TOWER
118.975 360.85 (RWY 18L/36R)
118.3 (RWYS 18C/36C, 09/27)



ROUTING TO CRISM
(not to scale)



MISSED APCH FIX

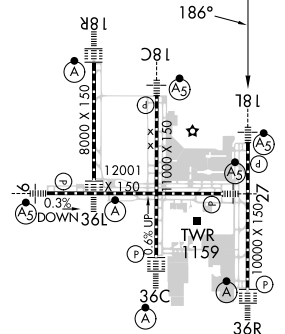
FALMOUTH
FLM 117.0
Chan 117

1067 A

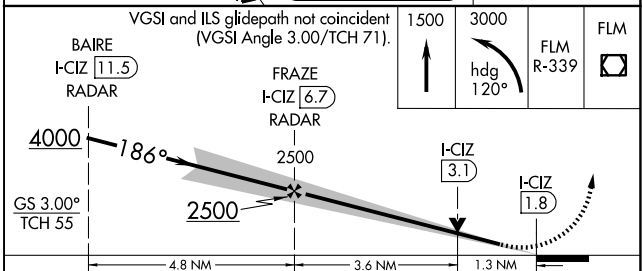
1114

FLM
R-330

LOCALIZER 110.15
I-CIZ
Chan 38(Y)



VGSI and ILS glidepath not coincident
(VGSI Angle 3.00/TCH 71).



CATEGORY	A	B	C	D
S-ILS 18L	1089/18 200 (200-½)			
S-LOC 18L	1360/24 471 (500-½)	1360/50 471 (500-1)		
C CIRCLING	1460-1 564 (600-1)	1560-1¾ 664 (700-1¾)	1560-2 664 (700-2)	