

LOC/DME I-EEI

110.35

Chan **40** (Y)

APP CRS

006°

Rwy Ldg

10000

TDZE

896

Apt Elev

896

ILS RWY 36R (CAT II & III)

CINCINNATI/NORTHERN KENTUCKY INTL (CVG)

RNP APCH-GPS. From BRCAT or RUPPP or FECTA or SPOOD or DAWGY.
DME or RADAR required. RADAR required for procedure entry at KYKAT.

ALSF-2

MISSED APPROACH: Climb to 1500 then climbing right turn to 4000 direct FLM VOR/DME and hold.

Simultaneous approach authorized.

D-ATIS

ARR

134.375

DEP

135.3

CINCINNATI APP CON

119.7 363.15 (090°-269°)

123.875 363.15 (270°-089°)

CINCINNATI TOWER

118.975 360.85 (RWY 18L/36R)

118.3 (RWYS 09/27, 18C/36C)

133.325 (RWY 18R/36L)

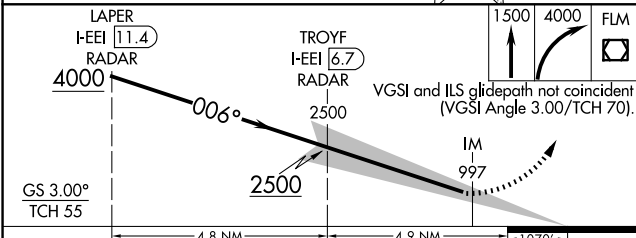
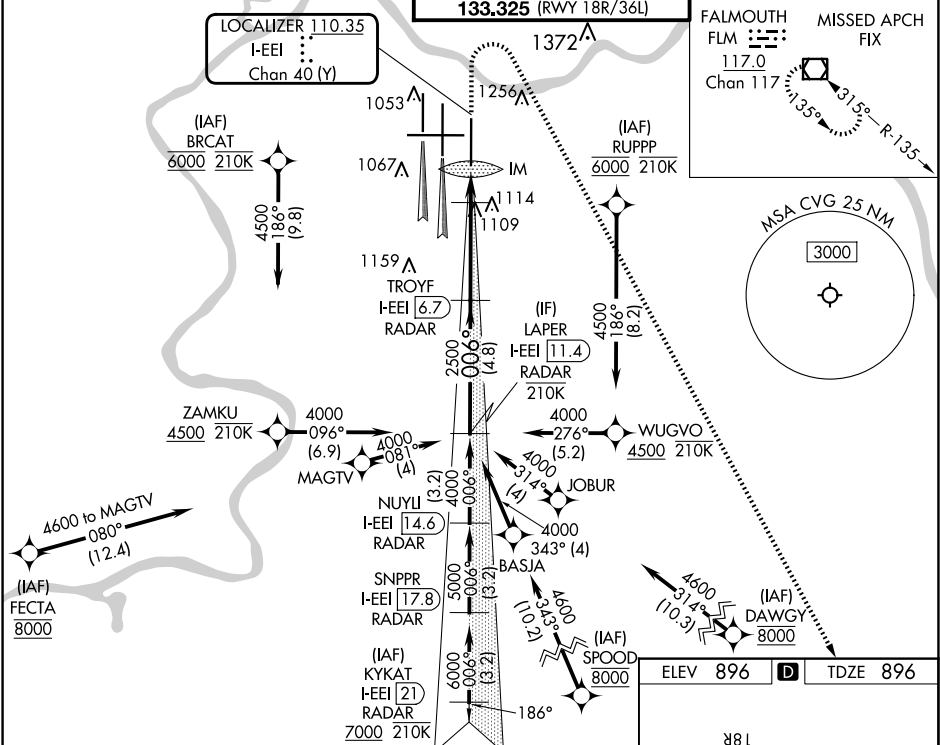
GND CON

121.7

CLNC DEL

127.175

CPDLC



CATEGORY	A	B	C	D
S-ILS 36R	CAT II RA 97/12 100 DA 996			
S-ILS 36R	CAT III RVR 06			

CATEGORY II & III ILS - SPECIAL AIRCREW & AIRCRAFT CERTIFICATION REQUIRED

