


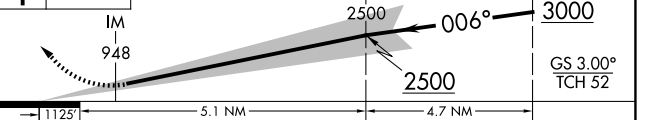
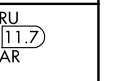
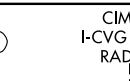
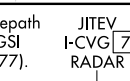
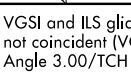
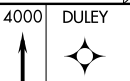
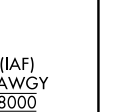
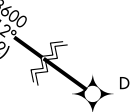
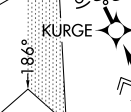
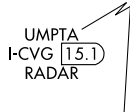
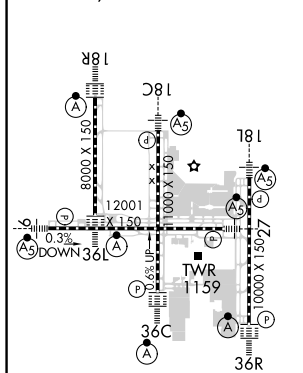
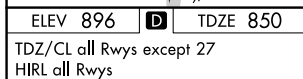
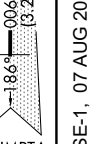
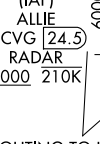
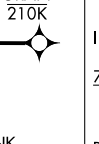
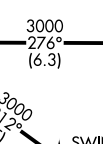
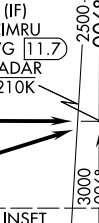
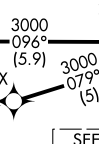
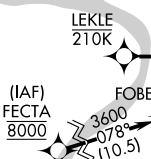
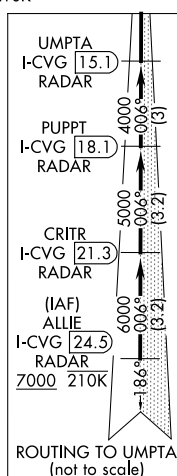
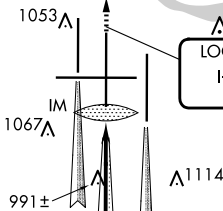
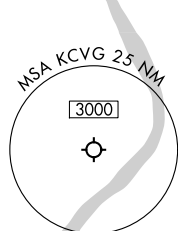
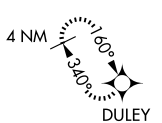
LOC/DME I-CVG <b>109.9</b> Chan <b>36</b>	APP CRS <b>006°</b>	Rwy Ldg <b>11000</b> TDZE <b>850</b> Apt Elev <b>896</b>
---	------------------------	--

**ILS RWY 36C (CAT II & III)**  
CINCINNATI/NORTHERN KENTUCKY INTL (CVG)

RNP APCH - GPS.	ALSF-2	<p>MISSED APPROACH: Climb to 4000 direct DULEY and hold, continue climb-in-hold to 4000.</p>
<p><b>T</b> Simultaneous approach authorized.</p>		

D-ATIS		CINCINNATI APP CON		CINCINNATI TOWER		GND CON	CLNC DEL	CPDLC
ARR	DEP	119.7	363.15 (090°-269°)	118.975	360.85 (Rwy 18L/36R)	121.7	127.175	
134.375	135.3	123.875	363.15 (270°-089°)	118.3	(Rwys 18C/36C, 9/27)			

MISSED APCH FIX



CATEGORY	A	B	C	D
S-ILS-36C	CAT II RA 130/12		100	DA 950
S-ILS 36C	CAT IIIa		RVR 07	
S-ILS 36C	CAT IIIb		RVR 06	
S-ILS 36C	CAT IIIc		NA	

CATEGORY II & III ILS - SPECIAL AIRCREW  
& AIRCRAFT CERTIFICATION REQUIRED