

LOC I-JDP <u>108.7</u>	APP CRS 276°	Rwy Ldg 12000 TDZE 875 Apt Elev 896
----------------------------------	------------------------	--

ILS RWY 27 (SA CAT I & II)

CINCINNATI/NORTHERN KENTUCKY INTL (CVG)

RNP APCH - GPS. From FISBU, BREWZ, ZALD or YEYUP.

RADAR required for procedure entry at KAYDE.

T SA Cat I & II: Requires specific OPSPEC, MSPEC, or LOA approval.

MALSR



MISSED APPROACH: Climb to 2000 then climbing left turn to 3000 direct FLM VOR/DME and hold.

D-ATIS		CINCINNATI APP CON	CINCINNATI TOWER	GND CON	CLNC DEL	CPDLC
ARR	DEP	119.7 363.15 (090°-269°)	118.975 360.85 (RWY 18L/36R)			
134.375	135.3	123.875 363.15 (270°-089°)	118.3 (RWY5 18C/36C 09/27)	121.7	127.175	

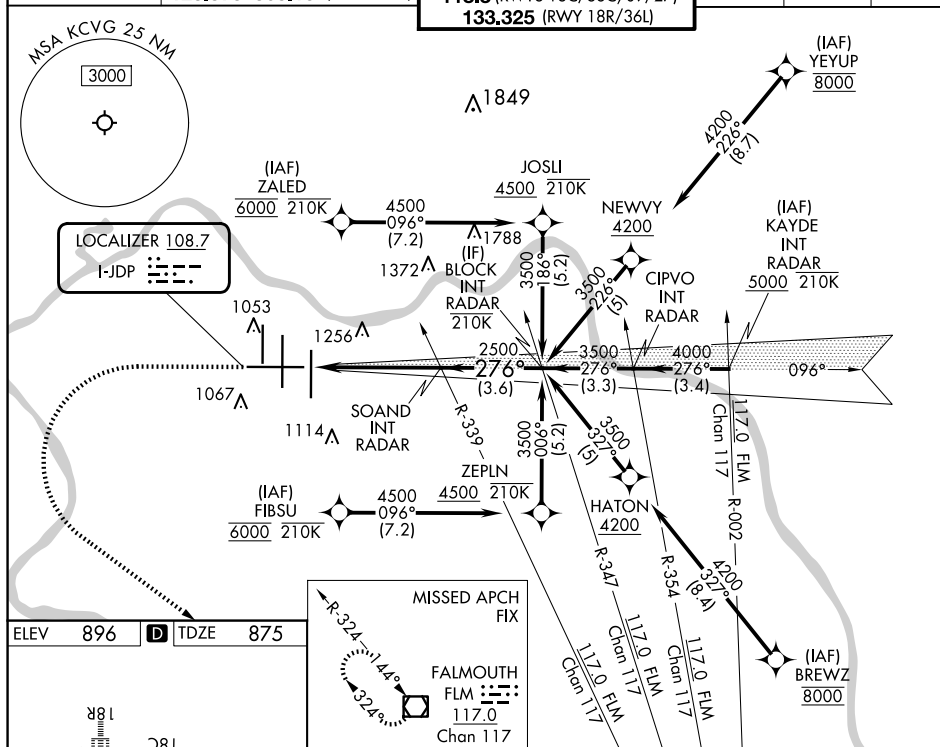


Diagram illustrating the HIRL (High Intensity Runway Lighting) and TWR (Tower) locations at Laramie County Airport. The diagram shows the runway layout with various lights and distances. Key features include: Runway 18L (8000 x 150 ft), Runway 18R (8000 x 150 ft), Runway 36L (3600 x 150 ft), Runway 36R (3600 x 150 ft), and Runway 12001 (1200 x 150 ft). The TWR is located at 1159 ft. The diagram also shows the HIRL (High Intensity Runway Lighting) and TWR (Tower) locations. The diagram is labeled "HIRL all Rwy's" and "TDZ/CL all Rwy's except 27".

ILS RWY 27 (SA CAT I & II)