

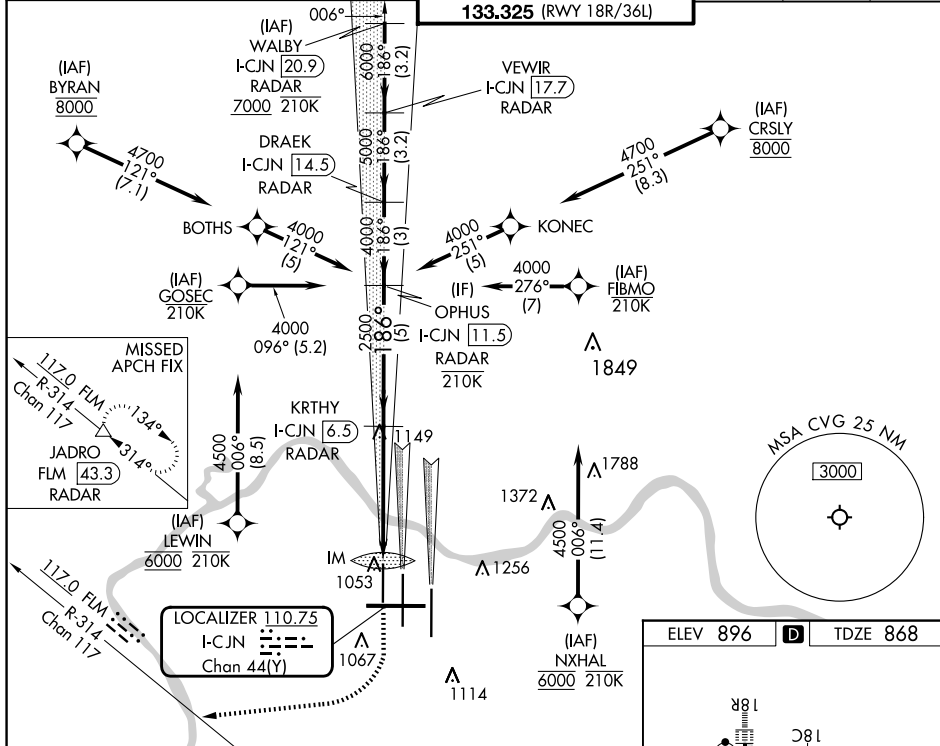
ILS RWY 18R (CAT II)
CINCINNATI/NORTHERN KENTUCKY INTL (CVG)

ALSF-2

MISSED APPROACH: Climb to 1300 then climbing right turn to 4000 on heading 270° and FLM VOR/DME R-314 to JADRO/FLM 43.3 DME/RADAR and hold.

T Simultaneous approach authorized with Rwy 18L/C.
Use of FD or AP required during simultaneous operations.

D-ATIS		CINCINNATI APP CON		CINCINNATI TOWER		GND CON	CLNC DEL	CPDLC
ARR	DEP	119.7	363.15 (090°-269°)	118.975	360.85 (RWY 18L/36R)	121.7	127.175	
134.375	135.3	123.875	363.15 (270°-089°)	118.3 (RWYS 18C/36C, 09/27)	133.325 (RWY 18R/36L)			
		006°						



1300 4000
↑ hdg R-314
270° △

KRTHY
I-CJN 6.5
RADAR

OPHUS
I-CJN 11.5
RADAR

IM

2500 186° 4000

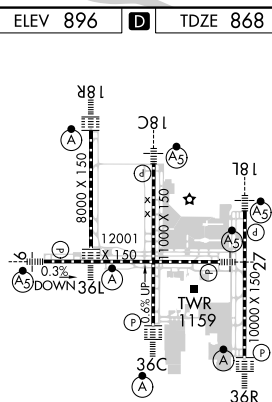
2500

GS 3.00°
TCH 58

1-1141-5 5 NM 5 NM

CATEGORY	A	B	C	D
S-ILS 18R	RA 113/12 100 DA 968			

CATEGORY II ILS - SPECIAL AIRCREW
& AIRCRAFT CERTIFICATION REQUIRED



HIRL all Rwys
TDZ/CL all Rwys except 27