

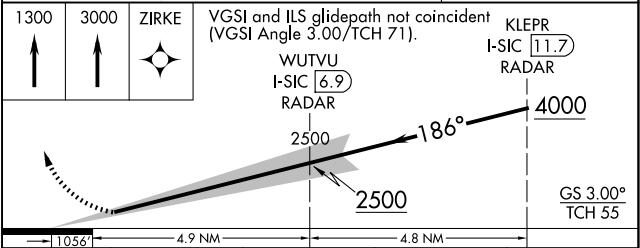
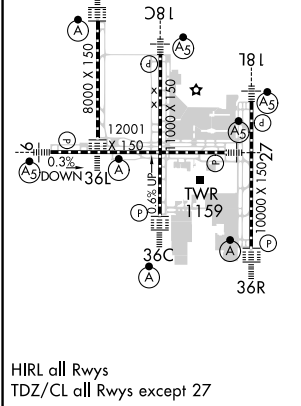
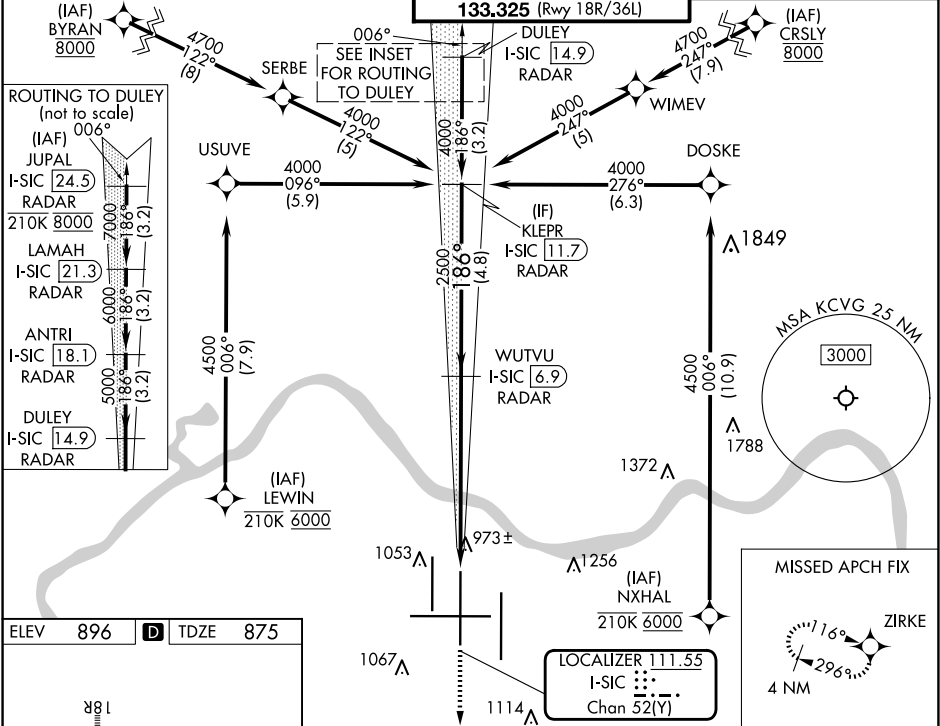
LOC/DME I-SIC	APP CRS	Rwy Ldg	11000
<b>111.55</b>	<b>186°</b>	TDZE	<b>875</b>
Chan <b>52(Y)</b>		Apt Elev	<b>896</b>

ILS RWY 18C (SA CAT I & II)

CINCINNATI/NORTHERN KENTUCKY INTL (CVG)

RNP APCH - GPS.	MALSR	MISSED APPROACH: Climb to 1300, then climb to 3000 direct ZIRKE and hold.
RADAR required.		
Simultaneous approach authorized. Requires specific OPSPEC, MSPEC, or LOA approval.		

D-ATIS	CINCINNATI APP CON	CINCINNATI TOWER	GND CON	CLNC DEL	CPDLC
ARR <b>134.375</b> DEP <b>135.3</b>	<b>119.7 363.15</b> (090°-269°) <b>123.875 363.15</b> (270°-089°)	<b>118.975 360.85</b> (Rwy 18L/36R) <b>118.3</b> (Rwys 18C/36C, 9/27) <b>133.325</b> (Rwy 18R/36L)	<b>121.7</b>	<b>127.175</b>	



CATEGORY	A	B	C	D
S-ILS 18C	SA CAT I	RA 191/16	150 DA 1025	
S-ILS 18C	SA CAT II	RA 100/12	100 DA 975	

SA CATEGORY I & II ILS-SPECIAL AIRCREW & AIRCRAFT CERTIFICATION REQUIRED