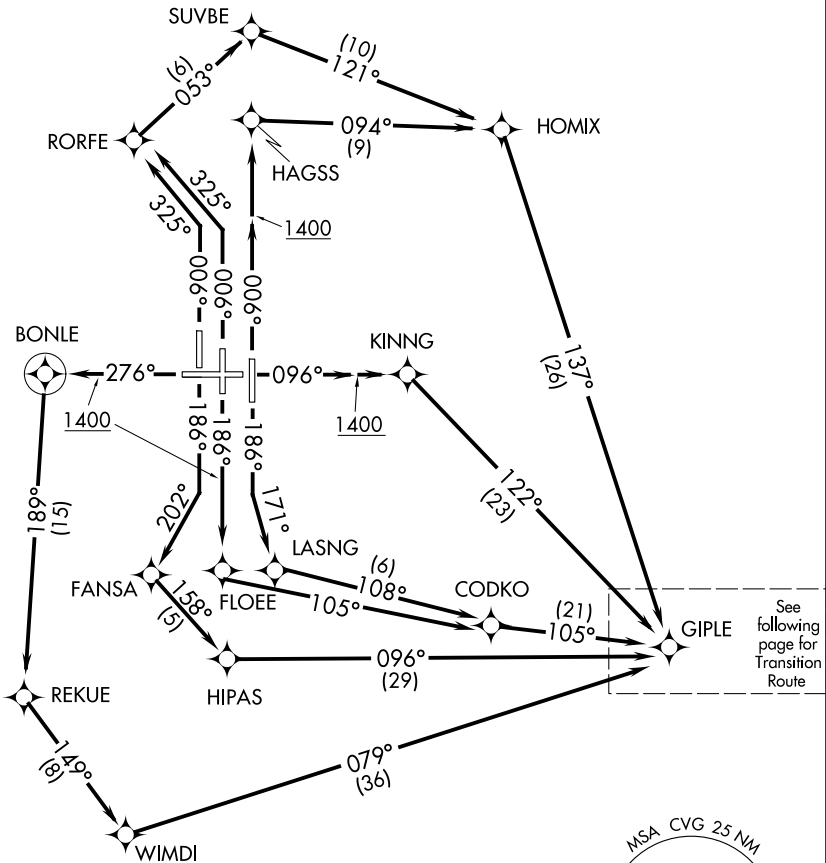


RNAV 1 - DME/DME/IRU or GPS.	TOP ALTITUDE: (JETS/PROPS) 5000 4000	D-ATIS DEP 135.3 CINCINNATI TOWER 118.3 (RWYS 18C/36C, 9/27) 118.975 360.85 (RWY 18L/36R) 133.325 (RWY 18R/36L) GND CON 121.7 CLNC DEL 127.175 CPDLC CINCINNATI DEP CON 126.65 254.25 (001°-180°) 128.7 254.25 (181°-360°)
RADAR required for non-GPS equipped aircraft.		

TAKEOFF MINIMUMS:  
Rwys 9, 18L/C/R, 27, 36L/C/R: Standard.



NOTE: Transponder code will be issued via PDC or Cincinnati CLNC DEL.  
NOTE: Increase speed to 250K until reaching/leaving 10000'. If unable, advise ATC.

NOTE: Chart not to scale. (CONTINUED ON FOLLOWING PAGE)