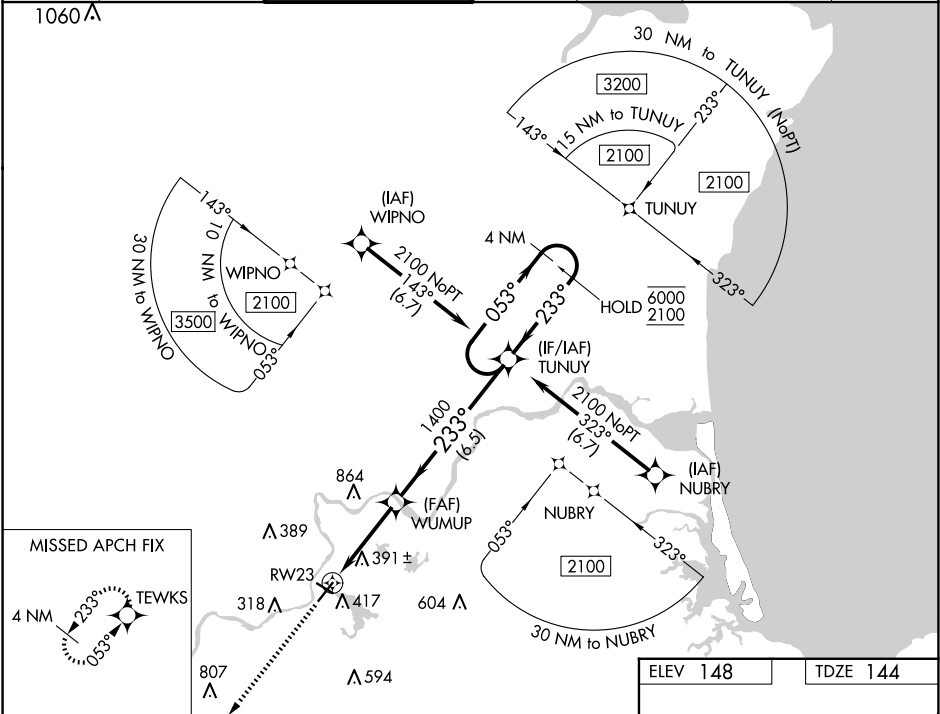


WAAS CH 61022 W23A	APP CRS 233°	Rwy Ldg TDZE 144 Apt Elev 148
--	------------------------	---

RNAV (GPS) RWY 23

LAWRENCE MUNI (LWM)

RNP APCH - GPS					MISSED APPROACH: Climb to 2000 direct TEWKS and hold.	
Rwy 23 helicopter visibility reduction below ¾ SM NA. Circling Rwy 32 NA at night. For uncompensated Baro-VNAV systems, LNAV/VNAV NA below -16°C or above 54°C.						
ATIS 126.75	BOSTON APP CON 124.4 279.6	LAWRENCE TOWER ★ 119.25 (CTAF) 0	GND CON 124.3	CLNC DEL 124.3	CLNC DEL 126.15 (When twr closed)	UNICOM 122.8



2000	TEWKS	VGSI and RNAV glidepath not coincident [VGSI Angle 3.70/TCH 55].			
↑	✧				
		TUNUY			
		4 NM Holding Pattern			
		053° → 6000			
		← 233° 2100			
		GP 3.10° TCH 55			
		1.2 NM 2.5 NM 6.5 NM			
CATEGORY		A	B	C	D
LPV DA			562-1 ⅜	418 (500-1 ⅜)	
LNAV/VNAV DA			660-1 ¾	516 (600-1 ¾)	
LNAV MDA		660-1	516 (600-1)	660-1 ¾	516 (600-1 ¾)
CIRCLING		740-1	592 (600-1)	920-2 ¼	1220-3
				772 (800-2 ¼)	1072 (1100-3)

