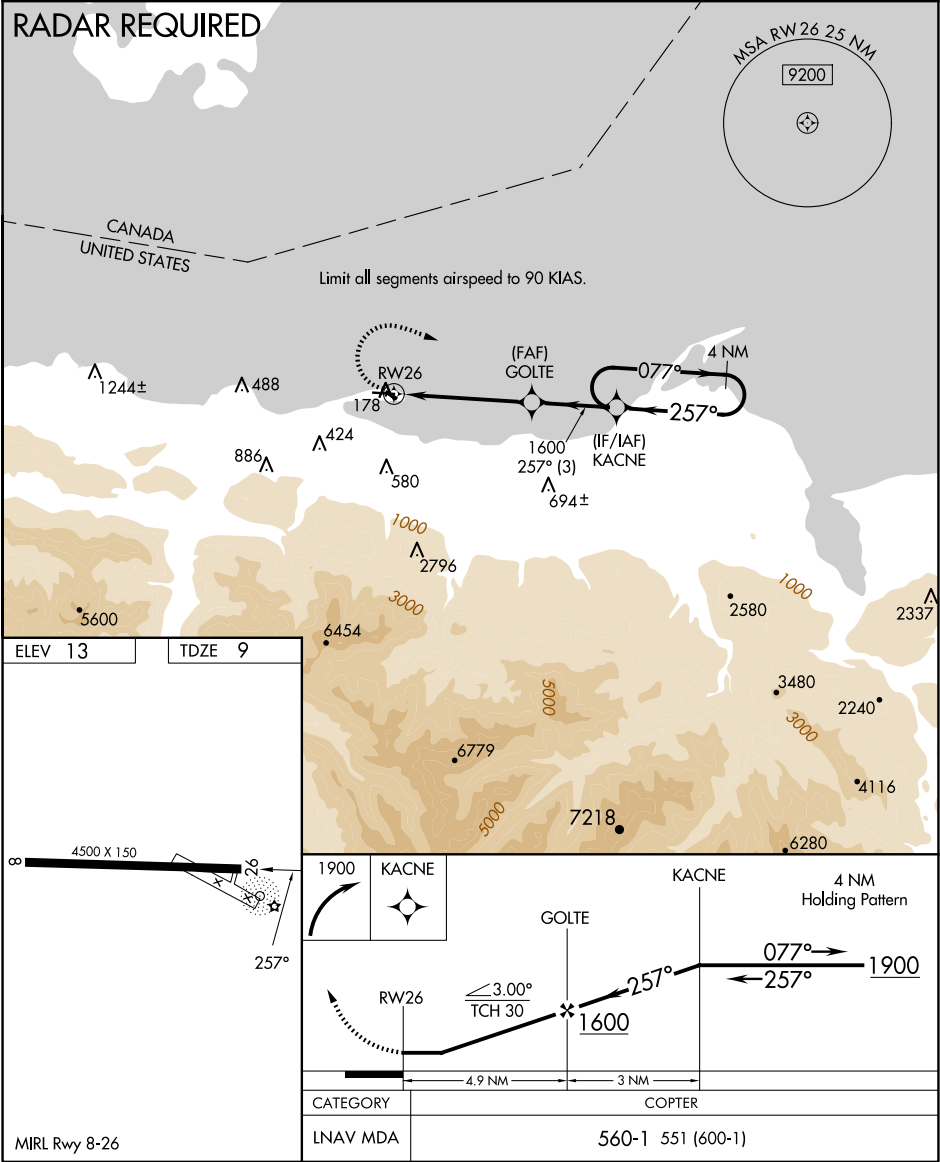


APP CRS	Rwy Idg	4500
257°	TDZE	9
	Apt Elev	13

COPTER RNAV (GPS) RWY 26  
PORT ANGELES CGAS (NOW)

<p>▼ ▲</p>	<p>Use William R Fairchild Intl altimeter setting; when not received, use Whidbey Island NAS (Ault Fld) altimeter setting and increase MDA 120 feet. DME/DME RNP-0.3 NA. Prior permission required.</p>	<p>MISSED APPROACH: Climbing right turn to 1900 direct KACNE and hold.</p>
----------------	---	--

AWOS-3P 118.325	WHIDBEY APP CON 118.2 285.65	PORT ANGELES AIR 127.7 345.0	CLNC DEL 124.15	UNICOM 122.975 (CTAF)
--------------------	---------------------------------	---------------------------------	--------------------	--------------------------



NW-1, 07 AUG 2025 to 04 SEP 2025

NW-1, 07 AUG 2025 to 04 SEP 2025