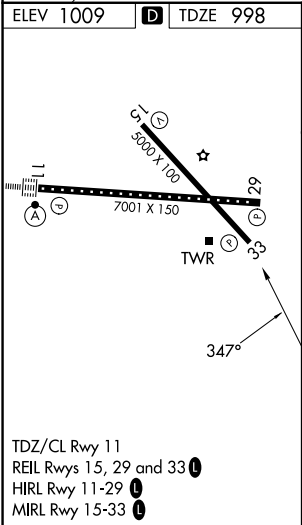
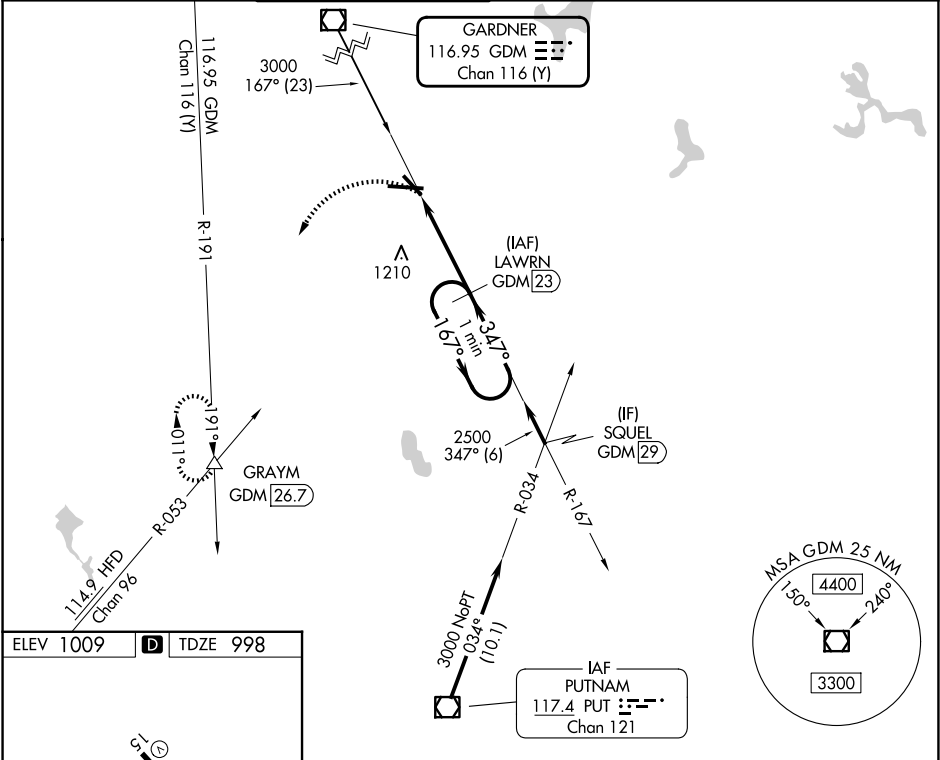


VOR/DME GDM	APP CRS	Rwy Ldg	5000
116.95	347°	TDZE	998
Chan 116 (Y)		Apt Elev	1009

VOR/DME RWY 33

WORCESTER RGNL (ORH)

<div><div>⚠</div><div>⚠</div></div>	When local altimeter setting not received, use Bedford altimeter setting and increase all MDAs 200 feet; increase S-33 Cat C/D visibility ½ SM and Circling Cat B ¼ SM.			MISSED APPROACH: Climbing left turn to 3000 on heading 240° and GDM VOR/DME R-191 to GRAYM INT/GDM 26.7 DME and hold.		
ATIS	YANKEE APP CON	WORCESTER TOWER ★	GND CON	CLNC DEL	CLNC DEL	UNICOM
126.55	119.0 327.1	120.5 (CTAF) 0 263.0	123.85	128.65	119.0 (When twr closed)	122.95



<div>3000</div> <div>hdg 240°</div>		<div>GDM R-191</div>		<div>GRAYM</div> <div>△</div>		<div>VGSI and descent angles not coincident (VGSI Angle 3.00/TCH 40).</div>	
				<div>LAWRN GDM 23</div>		<div>One Minute Holding Pattern</div>	
<div></div>							