

LOC/DME I-EKW	APP CRS	Rwy Ldg TDZE	7001 990
110.9 Chan 46	289°	Apt Elev	1009

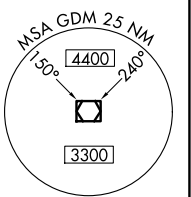
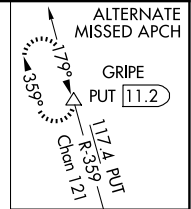
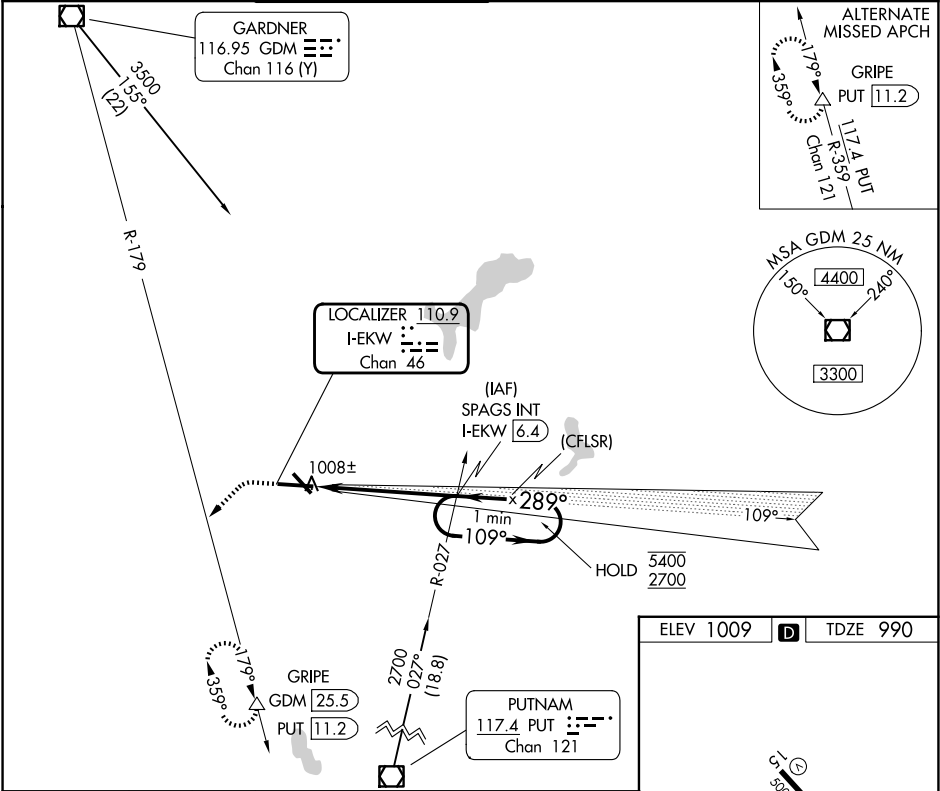
ILS or LOC RWY 29

WORCESTER RGNL (ORH)

Autopilot coupled approach NA below 1430 feet.

MISSED APPROACH: Climb to 1600 then climbing left turn to 3000 on heading 240° and on GDM VOR/DME R-179 to GRIPE INT/GDM 25.5 DME and hold, continue climb-in-hold to 3000.

ATIS	YANKEE APP CON	WORCESTER TOWER★	GND CON	CLNC DEL	CLNC DEL	UNICOM
126.55	119.0 327.1	120.5 (CTAF) 0 263.0	123.85	128.65	119.0 (When twr closed)	122.95



ELEV 1009 D TDZE 990

TDZ/CL Rwy 11
REIL Rwy 15, 29 and 33
HIRL Rwy 11-29
MIRL Rwy 15-33

FAF to MAP 5.2 NM

Knots	60	90	120	150	180
Min:Sec	5:12	3:28	2:36	2:05	1:44

NE-1, 07 AUG 2025 to 04 SEP 2025

NE-1, 07 AUG 2025 to 04 SEP 2025