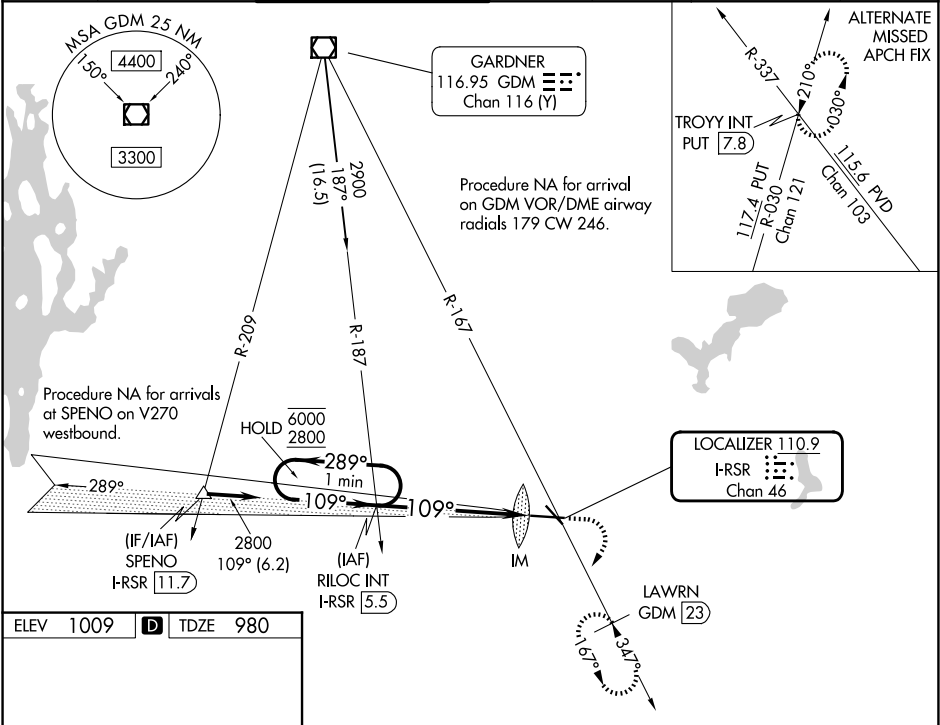


LOC/DME I-RSR	APP CRS	Rwy Ldg	7001
110.9	109°	TDZE	980
Chan 46		Apt Elev	1009

ILS or LOC RWY 11
WORCESTER RGNL (ORH)

<div>▼</div> <div>▲</div>	For inop ALS, increase S-LOC 11 Cats C and D visibility to 1½ SM. When control tower closed: inop table does not apply to S-ILS 11 all Cats. When control tower closed: for inop ALS, increase S-LOC 11 Cat C and D visibility to 1½ SM.		ALSIF-2 <div>Ⓐ</div>	MISSED APPROACH: Climb to 1800 then climbing right turn to 3100 on heading 230° and on GDM VOR/DME R-167 to LAWNRN/GDM 23 DME and hold, continue climb-in-hold to 3100.		
	ATIS 126.55	YANKEE APP CON 119.0 327.1	WORCESTER TOWER★ 120.5 (CTAF) 0 263.0	GND CON 123.85	CLNC DEL 128.65	CLNC DEL 119.0 (When twr closed)



ELEV 1009	D	TDZE 980
TDZ/CL Rwy 11 REIL Rws 15, 29 and 33 HIRL Rwy 11-29 MIRL Rwy 15-33		
FAF to MAP 5.5 NM		
Knots	60	90 120 150 180
Min:Sec	5:30	3:40 2:45 2:12 1:50

One Minute Holding Pattern		RILOC INT I-RSR 5.5	1800	3100	GDM R-167	LAWNRN GDM 23
6000 2800		2800	2800	2800	I-RSR 1.4	IM
GS 3.00° TCH 55		2800	2800	2800	IM	IM
4.1 NM		1.4 NM	0.1			
CATEGORY	A	B	C	D		
S-ILS 11	1180/18		200 (200-½)			
S-LOC 11	1500/24	520 (500-½)	1500/55	520 (500-1)		
CIRCLING	1560-1 551 (600-1)	1740-1 731 (800-1)	2000-3	991 (1000-3)		

NE-1, 07 AUG 2025 to 04 SEP 2025

NE-1, 07 AUG 2025 to 04 SEP 2025