

WAAS CH 69519 W16A	APP CRS 163°	Rwy Ldg 6549 TDZE 439 Apt Elev 439
--	------------------------	---

RNAV (GPS) Y RWY 16

WESTCHESTER COUNTY (HPN)

**T
A**

For uncompensated Baro-VNAV systems, LNAV/VNAV
NA below -15°C (5°F) or above 54°C (130°F).
Circling Rwy 11, 29 NA at night.
DME/DME RNP-0.3 NA.

MALSR

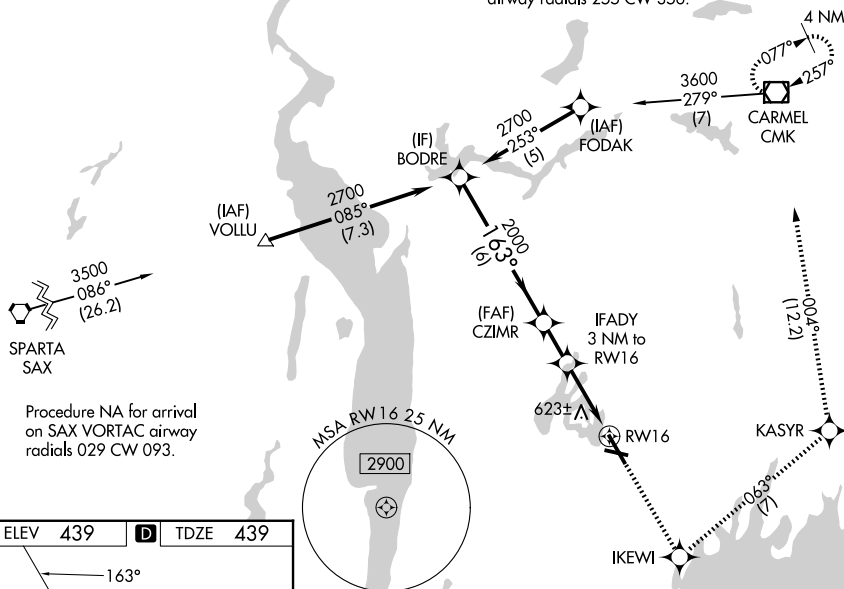


MISSED APPROACH: Climb to 2300
direct KEWI and left turn on track
063° to KASYR and on track 004°
to CMK VOR/DME and hold.

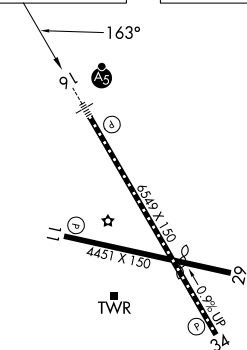
D-ATIS 133.8	NEW YORK APP CON 120.8 126.4 257.65	WESTCHESTER TOWER ★ 118.575 (CTAF) 0 284.65	GND CON 121.825	CLNC DEL 127.25	CLNC DEL 126.4 (when twr closed)	UNICOM 122.95
------------------------	---	---	---------------------------	---------------------------	---	-------------------------

CPDLC

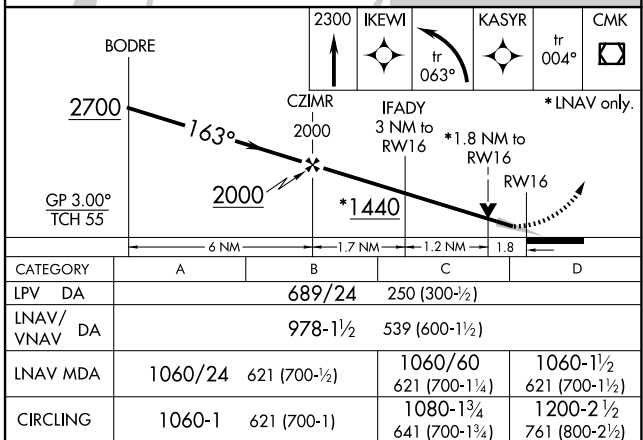
Procedure NA for arrival on CMK VOR/DME
airway radials 255 CW 356.



ELEV 439	D	TDZE 439
----------	----------	----------



REIL Rwy 11 and 34 **L**
HIRL Rwy 16-34 **L**
MIRL Rwy 11-29 **L**
TDZ/CL Rwy 16 **L**



RNAV (GPS) Y RWY 16