

APP CRS 163°	Rwy Ldg TDZE Apt Elev	6549 439 439
------------------------	-----------------------------	---

RNAV (RNP) Z RWY 16
WESTCHESTER COUNTY (HPN)

RNP AR APCH - GPS.

T For uncompensated Baro-VNAV systems, procedure NA below -14°C or above 54°C.

MALSR



MISSED APPROACH: Climb to 3000 on track 163° to JIRUN, left turn to KIYBE, then track 353° to CMK VOR/DME and hold.

D-ATIS
133.8

NEW YORK APP CON
120.8 126.4 257.65

WESTCHESTER TOWER ★
118.575 (CTAF) **L** 284.65

GND CON
121.825

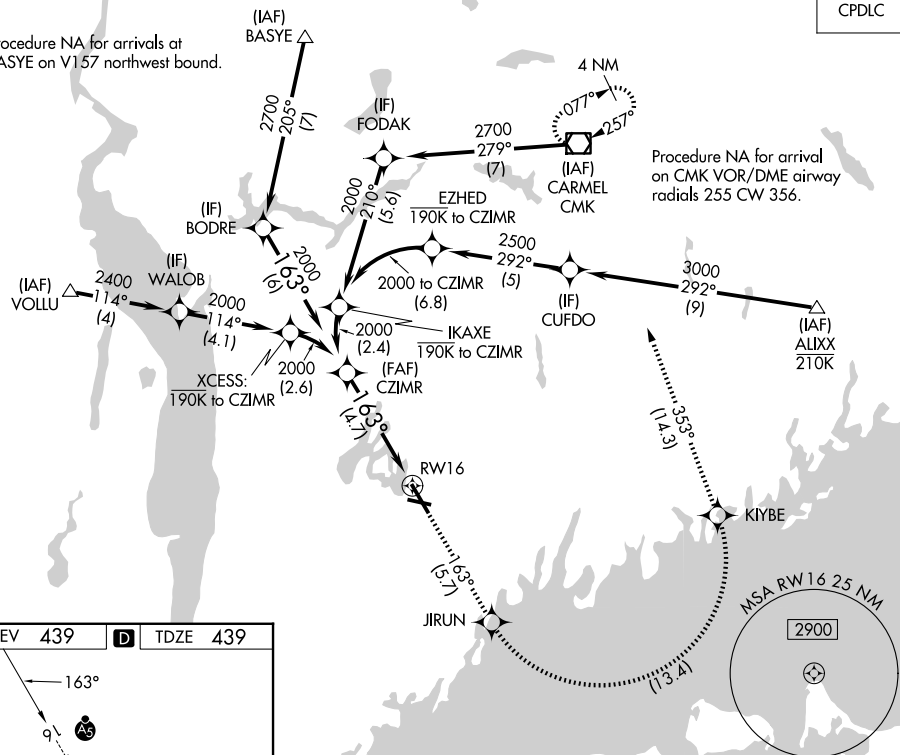
CLNC DEL
127.25

CLNC DEL
126.4
(when twr closed)

UNICOM
122.95

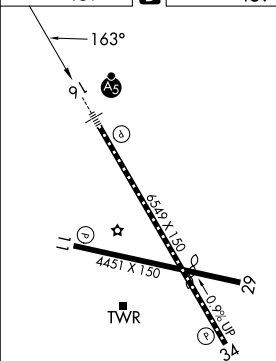
CPDLC

Procedure NA for arrivals at BASYE on V157 northwest bound.



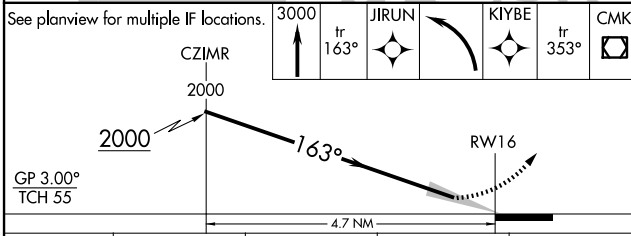
Procedure NA for arrival
on CMK VOR/DME airway
radials 255 CW 356.

ELEV 439	D	TDZE 439
----------	----------	----------



REIL Rwy 11 and 34 (L)
HIRL Rwy 16-34 (L)
MIRL Rwy 11-29 (L)
TDZ/CL Rwy 16 (L)

See planview for multiple IF locations.



CATEGORY	A	B	C	D
RNP 0.15 DA		826/35	387 (400-5%)	
RNP 0.30 DA		950/55	511 (600-1)	

AUTHORIZATION REQUIRED

WHITE PLAINS, NEW YORK
Orig-D 11AUG22

41°04'N-73°42'W

WESTCHESTER COUNTY (HPN)
RNAV (RNP) Z RWY 16