

LOC/DME I-OJZ	APP CRS	Rwy Ldg
109.7	343°	6549
Chan 34		TDZE 401
		Apt Elev 439

ILS or LOC RWY 34

WESTCHESTER COUNTY (HPN)

RADAR required for procedure entry.

▼

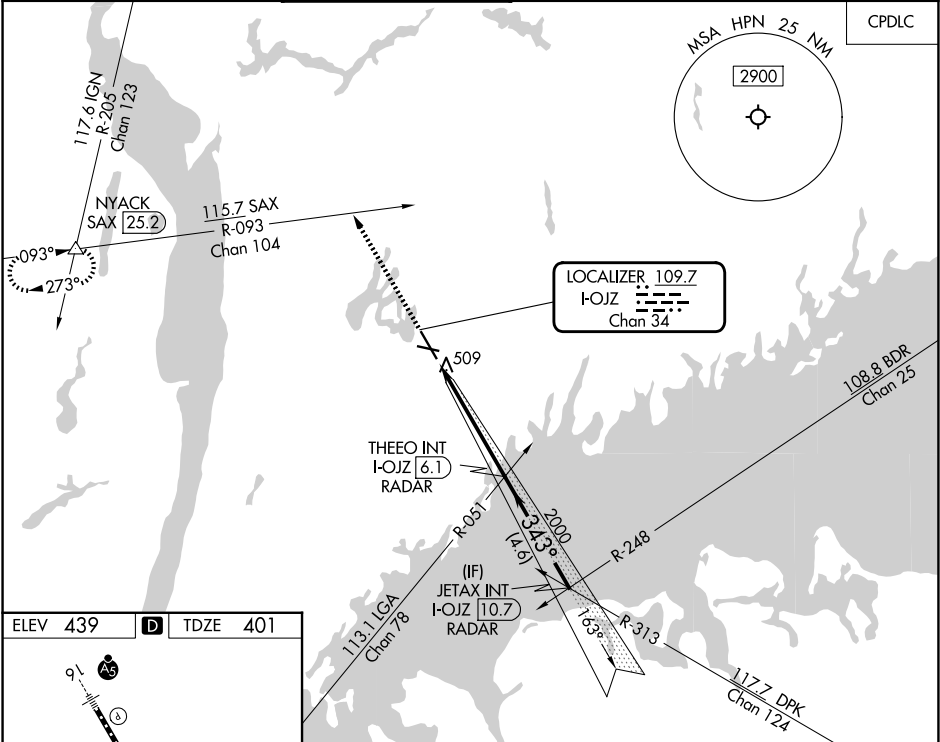
⚠

Circling Rwy 11, 29 NA at night.

Rwy 34 helicopter visibility reduction below ¾ SM NA.

MISSED APPROACH: Climb to 3000 on heading 343° and SAX R-093 to NYACK INT/SAX 25.2 DME and hold.

D-ATIS	NEW YORK APP CON	WESTCHESTER TOWER ★	GND CON	CLNC DEL	CLNC DEL	UNICOM
133.8	120.8 126.4 257.65	118.575 (CTAF) 0 284.65	121.825	127.25	126.4 (when twr closed)	122.95



ELEV **439** **D** TDZE **401**

REIL Rwy 11 and 34
HIRL Rwy 16-34
MIRL Rwy 11-29
TDZ/CL Rwy 16

FAF to MAP 4.9 NM

Knots	60	90	120	150	180
Min:Sec	4:54	3:16	2:27	1:58	1:38

	3000	SAX R-093	NYACK INT	THEEO INT I-OJZ 6.1 RADAR	JETAX INT I-OJZ 10.7 RADAR	
	hdg 343°					
	*LOC only		*I-OJZ 2.3	2000	2000	GS 3.00° TCH 55
	I-OJZ 1.2					
	1.2 NM	3.7 NM	4.6 NM			
CATEGORY	A	B	C	D		
S-ILS 34	742/60 341 (400-1¼)					
S-LOC 34	800/55	399 (400-1)	800/60	399 (400-1¼)		
CIRCLING	980-1	541 (600-1)	1080-1¾ 641 (700-1¾)	1200-2½ 761 (800-2½)		

NE-2, 07 AUG 2025 to 04 SEP 2025

NE-2, 07 AUG 2025 to 04 SEP 2025