

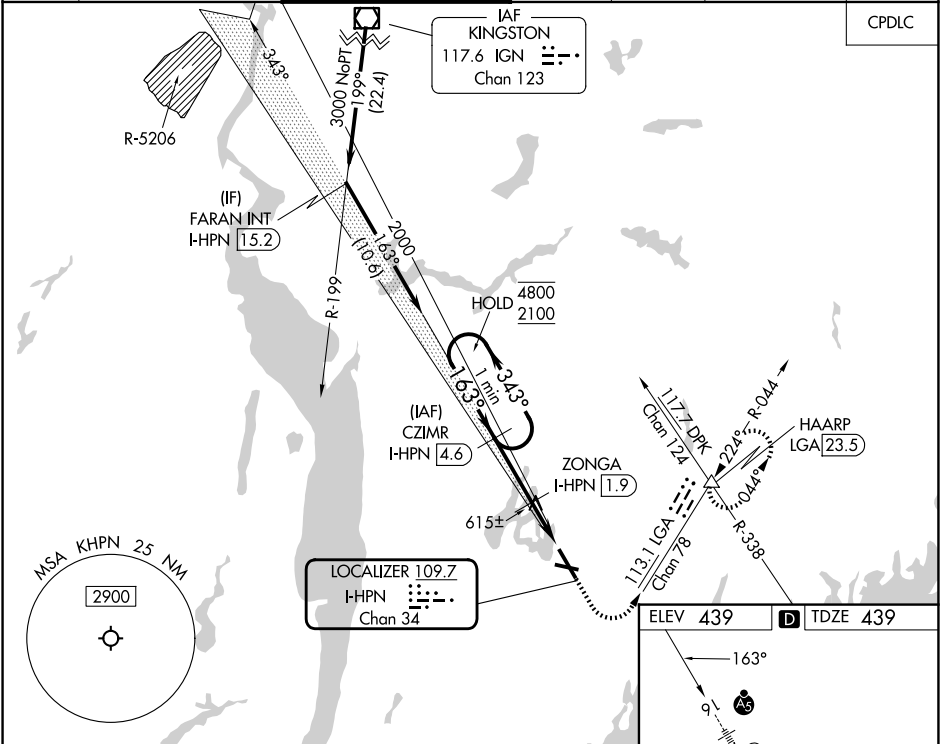
LOC/DME I-HPN	APP CRS	Rwy Ldg
109.7	163°	6549
Chan 34		TDZE 439
		Apt Elev 439

ILS or LOC RWY 16

WESTCHESTER COUNTY (HPN)

DME required for LOC only.		MALSR	MISSED APPROACH: Climb to 1000 then climbing left turn to 3000 on heading 150° and LGA VOR/DME R-044 to HAARP INT/LGA 23.5 DME and hold, continue climb-in-hold to 3000.
	Circling Rwy 11, 29 NA at night. For inop ALS, increase S-LOC 16 Cats C/D visibility to 1 3/8 SM.		

D-ATIS	NEW YORK APP CON	WESTCHESTER TOWER ★	GND CON	CLNC DEL	CLNC DEL	UNICOM
133.8	120.8 126.4 257.65	118.575 (CTAF) 0 284.65	121.825	127.25	126.4 (when twr closed)	122.95



One Minute Holding Pattern		CZIMR I-HPN 4.6	1000	3000	LGA R-044	HAARP
4800 ← 343°		2000	↑	hdg 150°		△
163° →		ZONGA I-HPN 1.9		I-HPN DME ANTENNA	* LOC only.	
2000				* I-HPN 1.3	I-HPN 0.1	
GS 3.00° TCH 55						
		2.7 NM	0.6	1.4 NM		
CATEGORY	A	B	C	D		
S-ILS 16		639/18	200 (200-½)			
S-LOC 16	940/24	501 (600-½)	940/55	501 (600-1)		
CIRCLING	980-1	541 (600-1)	1080-1 3/4 641 (700-1 3/4)	1200-2 1/2 761 (800-2 1/2)		

MIRL Rwy 11-29

HIRL Rwy 16-34

REIL Rws 11 and 34

TDZ/CL Rwy 16