

LOC/DME I-HPN	APP CRS	Rwy Ldg
109.7	163°	6549
Chan 34		TDZE 439
		Apt Elev 439

ILS RWY 16 (SA CAT I & II)

WESTCHESTER COUNTY (HPN)

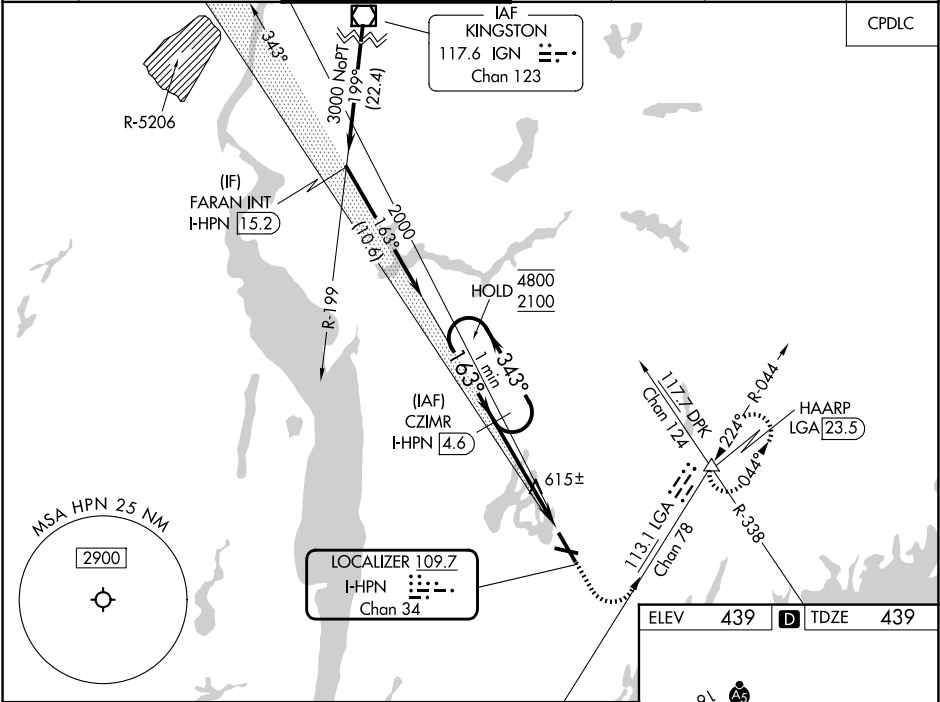
SA CAT I: Requires specific OPSPEC, MSPEC, or LOA approval and use of HUD to DH.

SA CAT II: Reduced lighting: Requires specific OPSPEC, MSPEC, or LOA approval and use of autoland or HUD to touchdown. Procedure NA when tower closed.

MALSR

MISSED APPROACH: Climb to 1000 then climbing left turn to 3000 on heading 150° and LGA VOR/DME R-044 to HAARP INT/LGA 23.5 DME and hold, continue climb-in-hold to 3000.

D-ATIS	NEW YORK APP CON	WESTCHESTER TOWER ★	GND CON	CLNC DEL	CLNC DEL	UNICOM
133.8	120.8 126.4 257.65	118.575 (CTAF) 0 284.65	121.825	127.25	126.4 (when twr closed)	122.95



One Minute Holding Pattern

GS 3.00°
TCH 55

CZIMR INT I-HPN 4.6

4.7 NM

1000 3000

HAARP

1000 3000

HAARP

CATEGORY	A	B	C	D
S-ILS 16		SA CAT I RA 198/14	150 DA 589	
S-ILS 16		SA CAT II RA 113/12	100 DA 539	

SA CATEGORY I & II SPECIAL AIRCREW & AIRCRAFT CERTIFICATION REQUIRED

MIRL Rwy 11-29

HIRL Rwy 16-34

REIL Rws 11 and 34

TDZ/CL Rwy 16