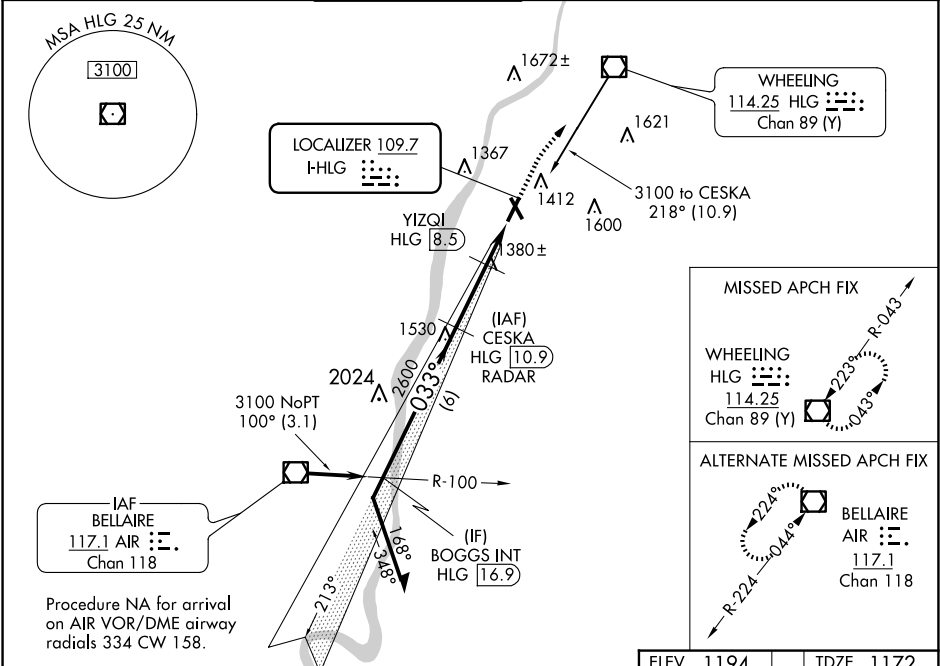


LOC I-HLG <b>109.7</b>	APP CRS <b>033°</b>	Rwy Idg TDZE Apt Elev <b>5002</b> <b>1172</b> <b>1194</b>	ILS or LOC RWY 3 WHEELING OHIO COUNTY (HLG)		
DME or RADAR required.			MALSF	MISSED APPROACH: Climb to 1700 then climbing right turn to 3100 direct HLG VOR/DME and hold. Continue climb-in-hold to 3100.	
Autopilot coupled approach NA below 1401. Inop table does not apply to S-ILS all Cats and S-LOC Cats A/B.					
ASOS <b>127.375</b>	PITTSBURGH APP CON <b>125.275 285.575</b>	WHEELING TOWER ★ <b>118.1</b> (CTAF) <b>0257.8</b>	GND CON <b>121.75</b>	CINC DEL <b>125.275</b> (when twr closed)	UNICOM <b>122.95</b>



Remain within 10 NM				
CESKA HLG 10.9 RADAR				
YIZQI HLG 8.5				
*LOC only.				
GS 3.00° TCH 60				
2.5 NM 0.5 NM 1.3 NM				
CATEGORY	A	B	C	D
S-ILS 3	1372/50 200 (200-1)			
S-LOC 3	1800/50	628 (700-1)	1800-1½	628 (700-1½)
CIRCLING	1800-1	606 (700-1)	1920-2 726 (800-2)	1920-2¼ 726 (800-2¼)
YIZQI FIX MINIMUMS				
S-LOC 3	1640/50	468 (500-1)	1640/60	468 (500-1¼)
CIRCLING	1720-1 526 (600-1)	1740-1 546 (600-1)	1920-2 726 (800-2)	1920-2¼ 726 (800-2¼)

