

SAGINAW, MICHIGAN

AL-648 (FAA)

25219

WAAS CH <b>82010</b> <b>W05A</b>	APP CRS <b>053°</b>	Rwy Ldg TDZE Apt Elev	<b>8002</b> <b>666</b> <b>668</b>
--	------------------------	-----------------------------	---

RNAV (GPS) RWY 5  
MBS INTL (MBS)

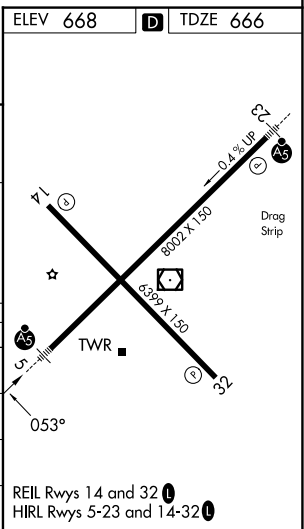
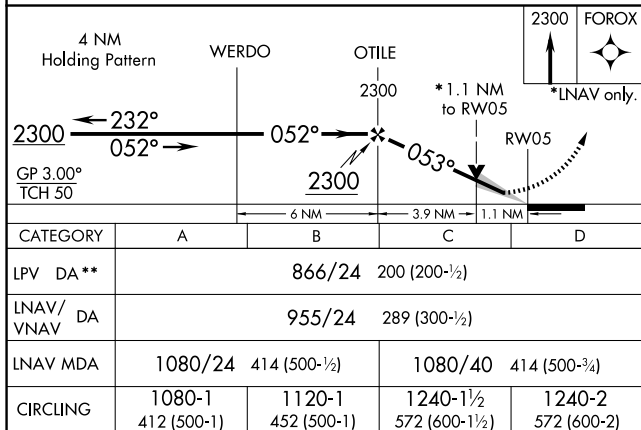
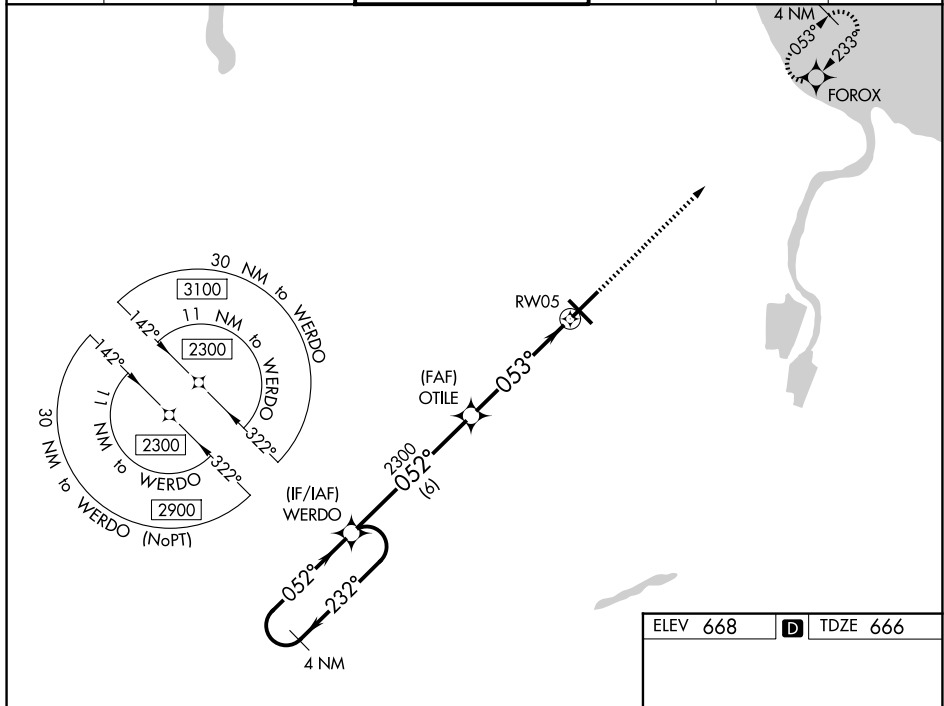
**T** For uncompensated Baro-VNAV systems, LNAV/VNAV NA below -18°C (0°F) or above 54°C (130°F). DME/DME RNP-0.3 NA. For inoperative ALS, increase LNAV/VNAV all Cats visibility to RVR 4500 and LNAV Cats C/D visibility to RVR 6000.  
**\*\*** RVR 1800 authorized with use of FD or AP or HUD to DA.

MALSR



**MISSED APPROACH:**  
Climb to 2300 direct  
FOROX and hold.

ATIS 125.925	GREAT LAKES APP CON★ 126.45 235.625	SAGINAW TOWER ★ 120.1(CTAF) 0 257.7	GND CON 121.7	CLNC DEL 121.85	UNICOM 122.95
-----------------	--	--	------------------	--------------------	------------------



SAGINAW, MICHIGAN  
Amdt 2 01FEB18

43°32'N - 84°05'W

MBS INTL (MBS)  
RNAV (GPS) RWY 5

EC-1, 07 AUG 2025 to 04 SEP 2025