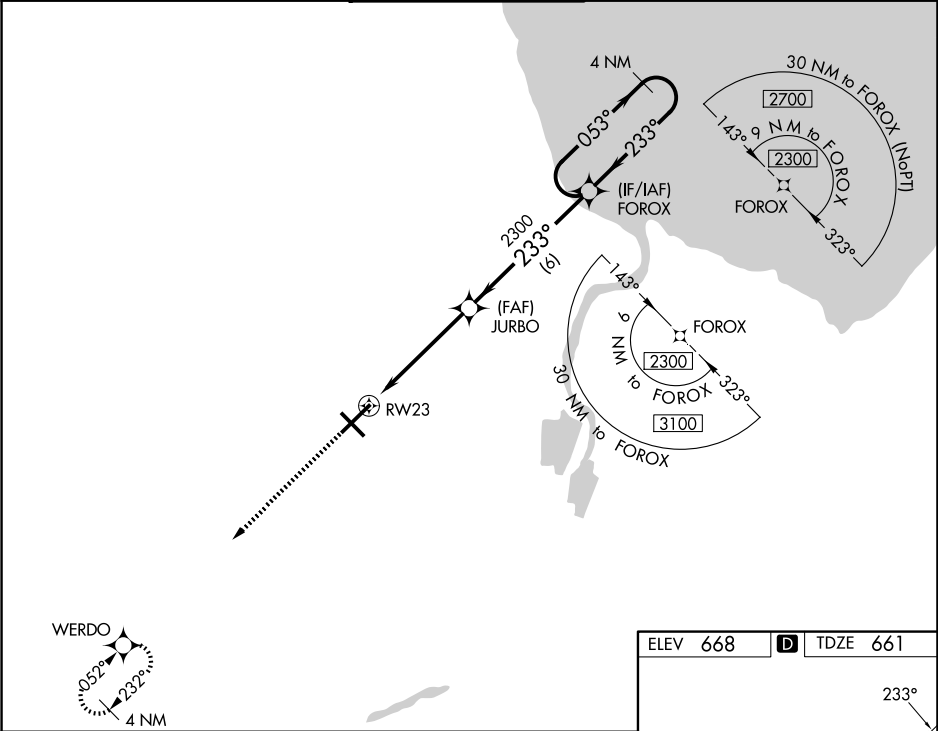


WAAS CH <b>49010</b> <b>W23A</b>	APP CRS <b>233°</b>	Rwy Ldg TDZE Apt Elev <b>8002</b> <b>661</b> <b>668</b>
--	------------------------	--

RNAV (GPS) RWY 23

MBS INTL (MBS)

<div><div>▼</div><div>For uncompensated Baro-VNAV systems, LNAV/VNAV NA below -18°C (0°F) or above 54°C (130°F). DME/DME RNP-0.3 NA. For inoperative ALS, increase LNAV/VNAV all Cats visibility to RVR 4500. # RVR 1800 authorized with use of FD or AP or HUD to DA.</div></div>	<div><div>MALSR</div><div><div><div></div></div><div><div></div></div></div></div>		<div>MISSED APPROACH: Climb to 2300 direct WERDO and hold.</div>			
ATIS 125.925	GREAT LAKES APP CON ★ 126.45 235.625		SAGINAW TOWER ★ 120.1 (CTAF) 0 257.7	GND CON 121.7	CLNC DEL 121.85	UNICOM 122.95



2300

↑

WERDO

\*LNAV only

\*1.1 NM to RW23

RW23

2300

233°

2300

FOROX

233°

2300

4 NM Holding Pattern

053° →

← 233°

2300

GP 3.00° TCH 54

1.1

3.9 NM

6 NM

CATEGORY	A	B	C	D
LPV DA #	861/24 200 (200-½)			
LNAV/ VNAV DA	940/24 279 (300-½)			
LNAV MDA	1060/24 399 (400-½)	1060/35 399 (400-¾)		
CIRCLING	1080-1 412 (500-1)	1120-1 452 (500-1)	1240-1½ 572 (600-1½)	1240-2 572 (600-2)

