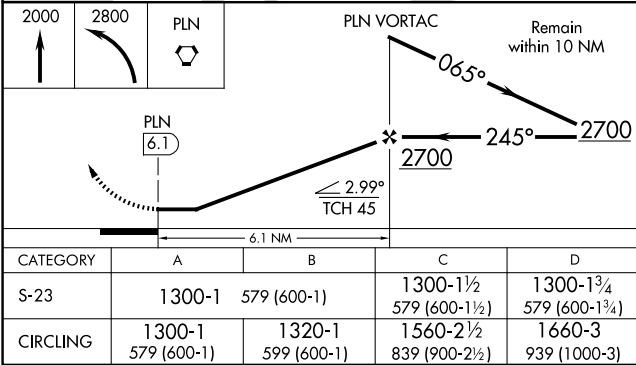
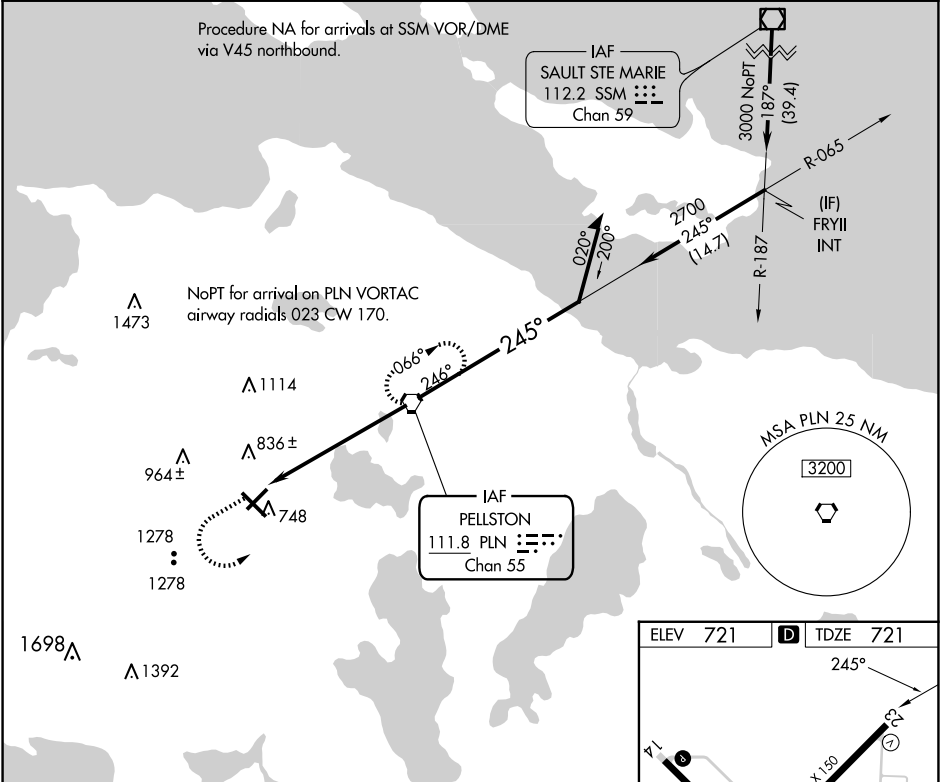


| | | |
|--------------|-------------|---------------------|
| VORTAC PLN | APP CRS | Rwy Idg |
| 111.8 | 245° | 5395 |
| Chan 55 | | TDZE 721 |
| | | Apt Elev 721 |

VOR RWY 23
PELLSTON RGNL/EMMET COUNTY (PLN)

| | |
|--|--|
| <p>▼ When local altimeter setting not received, use Harbor Springs altimeter setting: increase all MDA 40 feet and visibility S-23 Cat C and D ¼ SM. ▲ Rwy 23 helicopter visibility reduction below 1 SM NA. Straight-in Rwy 23 NA at night, Circling Rwy 5, 14, 23 NA at night.</p> | <p>MISSED APPROACH: Climb to 2000 then climbing left turn to 2800 direct PLN VORTAC and hold.</p> |
|--|--|

| | | |
|---------------------------------------|--|--|
| <p>ASOS 119.025</p> | <p>MINNEAPOLIS CENTER 134.6 354.05</p> | <p>UNICOM 123.0 (CTAF) 0</p> |
|---------------------------------------|--|--|



| | |
|-------------------------|--------------------------|
| ELEV 721 | TDZE 721 |
| 245° | |
| 5401 X 150 | |
| 6513 X 150 | |
| 766 | |
| HIRL Rwy 14-32 | |
| MIRL Rwy 5-23 | |
| REIL Rwys 5, 14, and 23 | |
| FAF to MAP 6.1 NM | |
| Knots | 60 90 120 150 180 |
| Min:Sec | 6:06 4:04 3:03 2:26 2:02 |

EC-1, 07 AUG 2025 to 04 SEP 2025

EC-1, 07 AUG 2025 to 04 SEP 2025