

WAAS CH 77813 W32A	APP CRS 321°	Rwy Idg 6513 TDZE 712 Apt Elev 721
--	------------------------	---

RNAV (GPS) RWY 32

PELLSTON RGNL/EMMET COUNTY (PLN)

RNP APCH - GPS.

▼

⚠

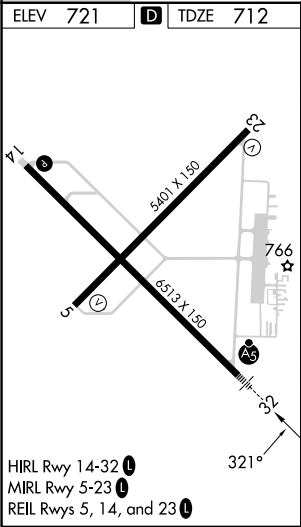
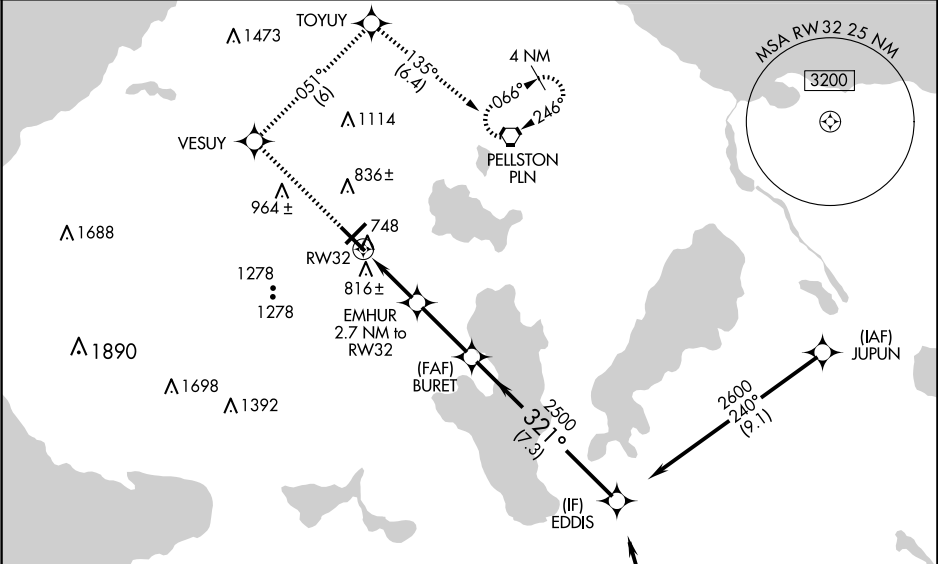
Circling Rwy 5, 14 NA at night. Baro-VNAV and VDP NA when using MGN altimeter setting. For uncompensated Baro-VNAV systems, LNAV/VNAV NA below -20°C or above 54°C. For inop ALS, increase LNAV/VNAV all Cats and LNAV Cat C/D visibility to 1 SM. For inop ALS when using MGN altimeter setting, increase LNAV/VNAV all Cats visibility to 1 SM and LNAV Cat C/D visibility to 1½ SM. When local altimeter setting not received, use MGN altimeter setting and increase LPV DA to 942 feet; increase LNAV/VNAV DA to 1086 feet; increase all MDAs 40 feet and LNAV visibility Cat C/D ½ SM.

MALSR

MISSED APPROACH:

Climb to 2600 direct VESUY and on track 051° to TOYUY and on track 135° to PLN VORTAC and hold. (Do not exceed 200K until TOYUY).

ASOS 119.025	MINNEAPOLIS CENTER 134.6 354.05	UNICOM 123.0 (CTAF) 0
------------------------	---	---------------------------------



Procedure NA for arrivals at RONDO on V609 southbound.

2600	VESUY	tr 051°	TOYUY	tr 135°	PLN	BURET	EDDIS
						2500	2600
						1620	2500
						1 NM	1.7 NM
						2.8 NM	7.3 NM
CATEGORY	A	B	C	D			
LPV DA		912-½	200 (200-½)				
LNAV/VNAV DA		1056-⅝	344 (400-⅝)				
LNAV MDA	1080-½	368 (400-½)	1080-⅝	368 (400-⅝)			
CIRCLING	1280-1 559 (600-1)	1320-1 599 (600-1)	1560-2½ 839 (900-2½)	1660-3 939 (1000-3)			