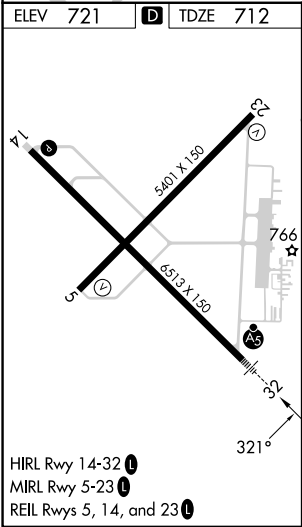
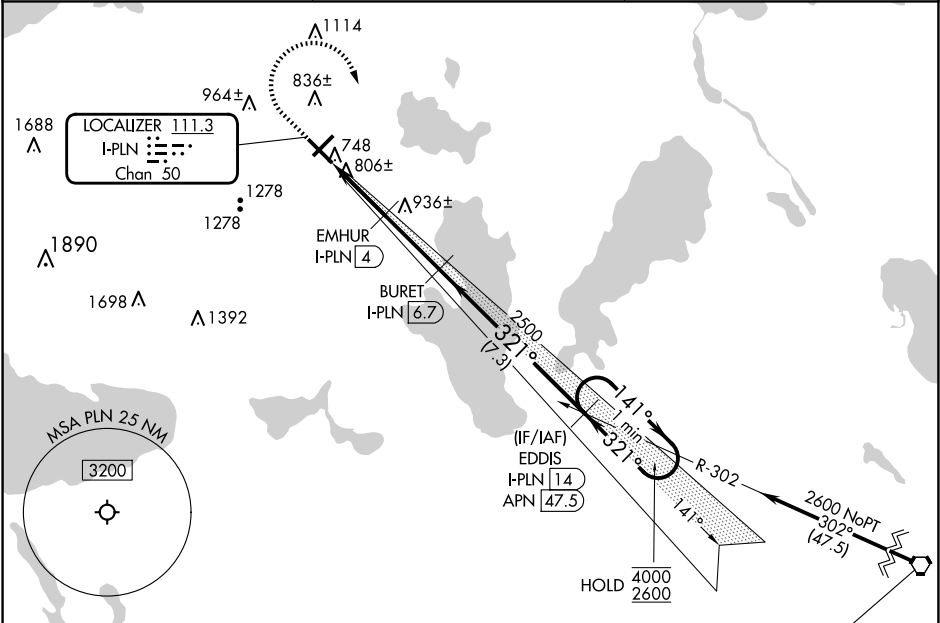


LOC/DME I-PLN 111.3 Chan 50	APP CRS 321°	Rwy Idg 6513 TDZE 712 Apt Elev 721
---	------------------------	---

ILS or LOC RWY 32
PELLSTON RGNL/EMMET COUNTY (PLN)

DME required.	MALSR AS	MISSED APPROACH: Climb to 1400 then climbing right turn to 2600 on heading 160° and APN VORTAC R-302 to EDDIS/ I-PLN 14 DME and hold.
⚠ Circling Rwy 5, 14 NA at night. Autopilot coupled approach NA below 1868 feet. ⚠ When local altimeter setting not received, use MGN altimeter setting and increase S-ILS 32 DA to 942 feet. Increase all MDAs 40 feet. For inop ALS, increase S-LOC 32 Cat C/D visibility to 1 SM. VDP NA when using MGN altimeter setting.		

ASOS 119.025	MINNEAPOLIS CENTER 134.6 354.05	UNICOM 123.0 (CTAF) 0
------------------------	---	---------------------------------



1400	2600	APN R-302	EDDIS I-PLN 14	EDDIS I-PLN 14	One Minute Holding Pattern
hdg 160°					
1620	2500	2500	321°	4000	2600
0.9 NM	1.8 NM	2.8 NM	7.3 NM		
CATEGORY	A	B	C	D	
S-ILS 32	912-1½		200 (200-½)		
S-LOC 32	1060-1½	348 (400-½)	1060-5/8	348 (400-5/8)	
CIRCLING	1280-1 559 (600-1)	1320-1 599 (600-1)	1560-2½ 839 (900-2½)	1660-3 939 (1000-3)	