

VOR/DME JPU	APP CRS	Rwy Idg
114.45	211°	6780
Chan 91 (Y)		TDZE 857
		Apt Elev 859

VOR RWY 21

MID-OHIO VALLEY RGNL (PKB)

ADF or DME required.

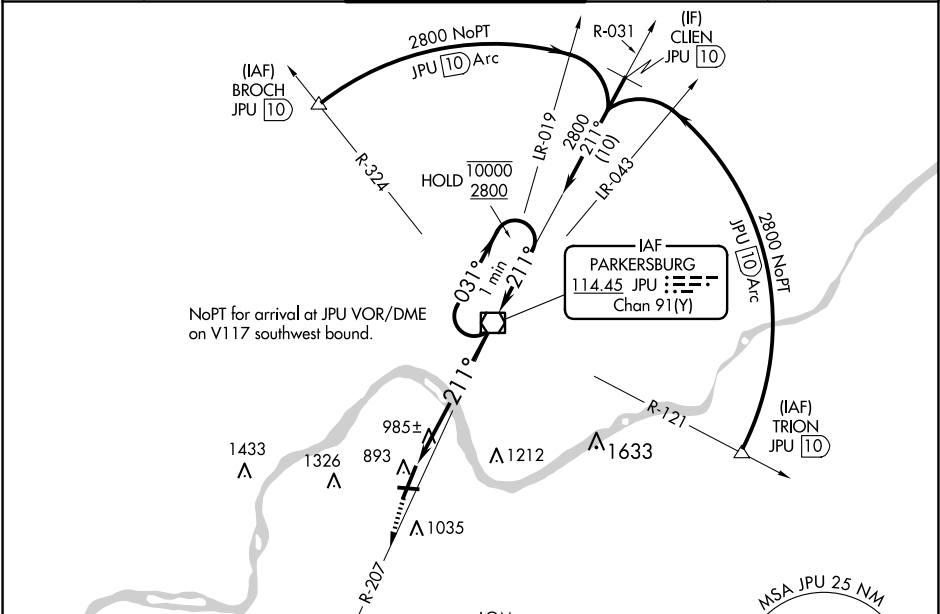
▼

NA

Circling Rwy 10, 28 NA at night. Rwy 21 helicopter visibility reduction below $\frac{3}{4}$ SM NA. VDP NA when using Athens/Albany altimeter setting. When local altimeter setting not received, use Athens/Albany altimeter setting and increase all MDA 100 feet, increase S-21 and Circling Cats C/D visibility $\frac{1}{2}$ SM.

MISSED APPROACH: Climb to 2600 on JPU VOR/DME R-207 to VERSI LOM/JPU 12.3 DME and hold.

ATIS	INDIANAPOLIS CENTER	PARKERSBURG TOWER★	GND CON	UNICOM
124.35	125.55 317.475	123.7 (CTAF) 257.8	126.45	122.95



ELEV	859	D	TDZE	857
------	-----	---	------	-----

Diagram of the airport layout showing runways 10, 21, and 28, taxiways, and the tower location. Key features include:

- Runways:** 10, 21, 28.
- taxiways:** 4002, 4002 X 150, 0.88 X 150.
- TWR:** 918.
- REIL Rwy 28:** HIRL Rwys 3-21 and 10-28.
- REIL Rwy 10, 21:**
- FAF to MAP:** 5.9 NM.
- Knots:** 60, 90, 120, 150, 180.
- Min:Sec:** 5:54, 3:56, 2:57, 2:22, 1:58.

2600

PK

JPU R-207

JPU 5.9

JPU 4.5

JPU VOR/DME

One Minute Holding Pattern

031°

211°

10000

2800

≤ 3.00°

TCH 56

CATEGORY	A	B	C	D
S-21	1380-1 523 (600-1)		1380-1½ 523 (600-1½)	1380-1¾ 523 (600-1¾)
CIRCLING	1380-1 521 (600-1)		1640-2¼ 781 (800-2¼)	1640-2½ 781 (800-2½)

NE-4, 07 AUG 2025 to 04 SEP 2025

NE-4, 07 AUG 2025 to 04 SEP 2025