

PARKERSBURG, WEST VIRGINIA

AL-646 (FAA)

24081

WAAS CH 86727 W21A	APP CRS 210°	Rwy Idg 6780 TDZE 857 Apt Elev 859
--	------------------------	---

RNAV (GPS) RWY 21

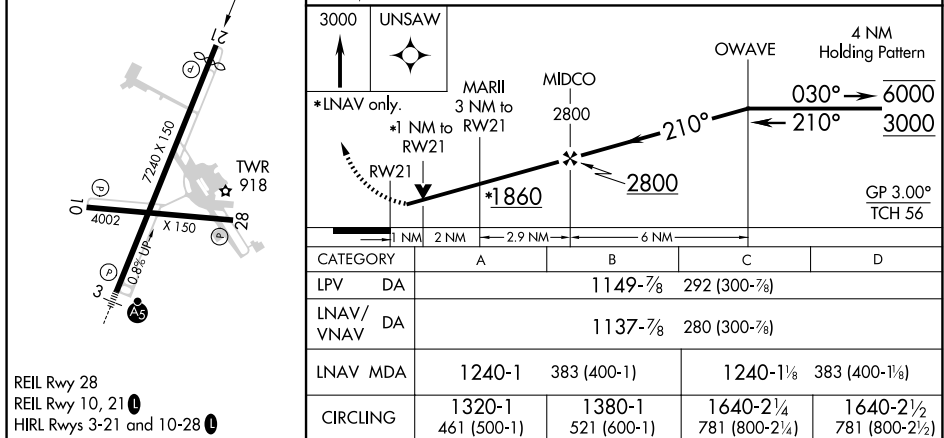
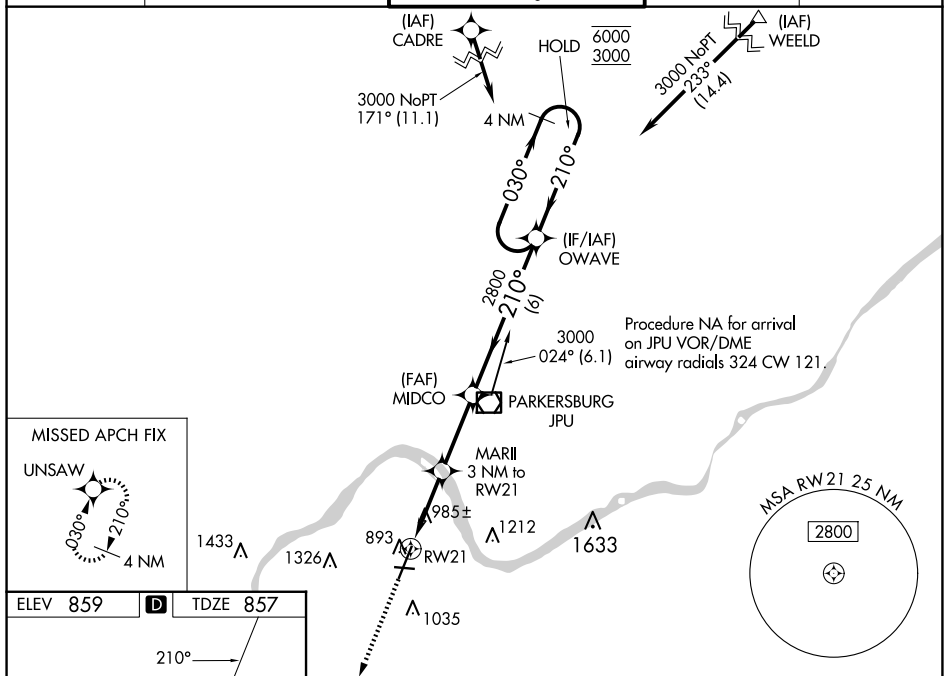
MID-OHIO VALLEY RGNL (PKB)

RNP APCH.

▼ Baro-VNAV and VDP NA when using Athens/Albany altimeter setting. Rwy 21 helicopter visibility reduction below $\frac{3}{4}$ SM NA. For uncompensated Baro-VNAV systems, procedure NA below -17°C or above 38°C. When local altimeter setting not received, use Athens/Albany altimeter setting: increase LPV DA to 1249 feet and visibility all Cats $\frac{1}{4}$ SM; increase LNAV/VNAV DA to 1237 feet and visibility all Cats $\frac{1}{2}$ SM; increase all MDAs 100 feet and visibility Cat C/D $\frac{1}{2}$ SM. Circling Rwy 10, 28 NA at night.

MISSED APPROACH:
Climb to 3000 direct
UNSAW and hold.

ATIS 124.35	INDIANAPOLIS CENTER 125.55 317.475	PARKERSBURG TOWER ★ 123.7 (CTAF) 0 257.8	GND CON 126.45	UNICOM 122.95
----------------	---------------------------------------	---	-------------------	------------------



PARKERSBURG, WEST VIRGINIA

Amdt 2E 02DEC21

MID-OHIO VALLEY RGNL (PKB)

RNAV (GPS) RWY 21

39°21'N-81°26'W

NE-4, 07 AUG 2025 to 04 SEP 2025

NE-4, 07 AUG 2025 to 04 SEP 2025