

LOC I-PKB 110.7	APP CRS 027°	Rwy Idg TDZE Apt Elev	6780 830 859
---------------------------	------------------------	-----------------------------	---

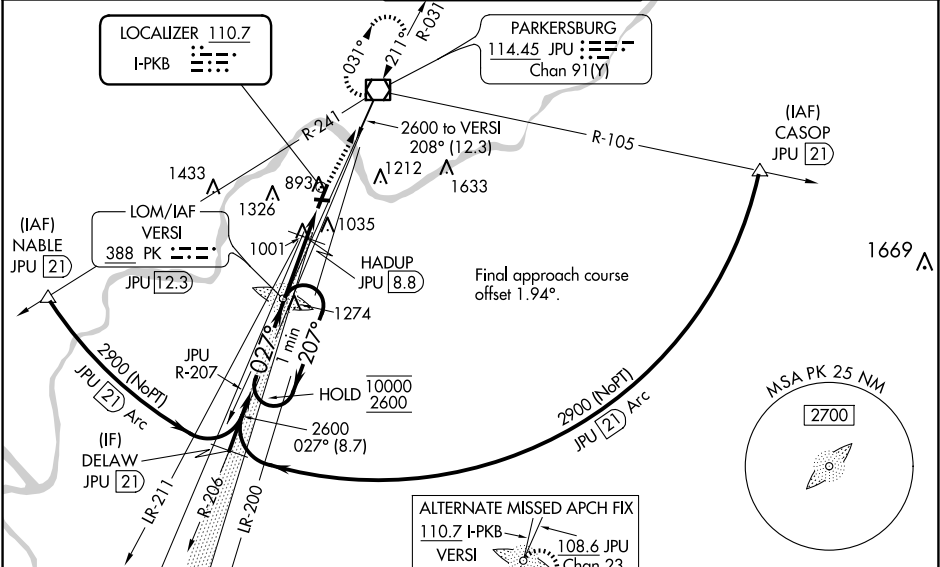
ILS or LOC RWY 3
MID-OHIO VALLEY RGNL (PKB)

NA Circling Rwy 10, 28 NA at night. Rwy 3 helicopter visibility reduction below RVR 4000 NA. When local altimeter setting not received, use Athens/Albany altimeter setting: increase DA to 1301 feet and visibility all Cats ¼ SM; increase all MDAs 100 feet and visibility Cats C and D ½ SM. For inop ALS, increase S-LOC 3 Cat A/B and S-LOC 3 HADUP fix minimums (DME required) Cat A/B visibility to RVR 5500. For inop ALS when using Athens/Albany altimeter setting, increase S-ILS 3 all Cats visibility to 1½ SM and S-LOC 3 all Cats and S-LOC 3 HADUP fix minimums (DME required) Cat A/B visibility to RVR 5500.

MALSR

MISSED APPROACH: Climb to 1400 then climbing right turn to 2700 direct JPU VOR/DME and hold.

ATIS 124.35	INDIANAPOLIS CENTER 125.55 317.475	PARKERSBURG TOWER ★ 123.7 (CTAF) 257.8	GND CON 126.45	UNICOM 122.95
-----------------------	--	--	--------------------------	-------------------------



ELEV 859 **D** **TDZE 830**

HIRL Rwy 3-21 and 10-28 **1**

REIL Rwy 10, 21 **1**

REIL Rwy 28

LOC 110.7 I-PKB
VERS I
PK 388
JPU 12.3

108.6 JPU
Chan 23

One Minute Holding Pattern					VERS I LOM JPU 12.3		HADUP JPU 8.8		JPU 7		JPU	
10000 2600					2592		1400		2700		JPU	
GS 3.00° TCH 49					*1380		1400		2700		JPU	
3.5 NM					1.8		1400		2700		JPU	
CATEGORY					A		B		C		D	
S-ILS 3					1201/40		371 (400-¾)					
S-LOC 3					1380/40		550 (600-¾)		1380/60		550 (600-1¼)	
CIRCLING					1380-1		521 (600-1)		1640-2¼		1640-2½	
HADUP FIX MINIMUMS (DME REQUIRED)					1380-1		521 (600-1)		1640-2¼		1640-2½	
S-LOC 3					1260/40		430 (500-¾)					
CIRCLING					1320-1		461 (500-1)		1380-1		521 (600-1)	

FAF to MAP 5.3 NM

Knots	60	90	120	150	180
Min:Sec	5:18	3:32	2:39	2:07	1:46