

VORTAC OLM	Rwy Idg	5500
113.4	TDZE	208
Chan 81	Apt Elev	208

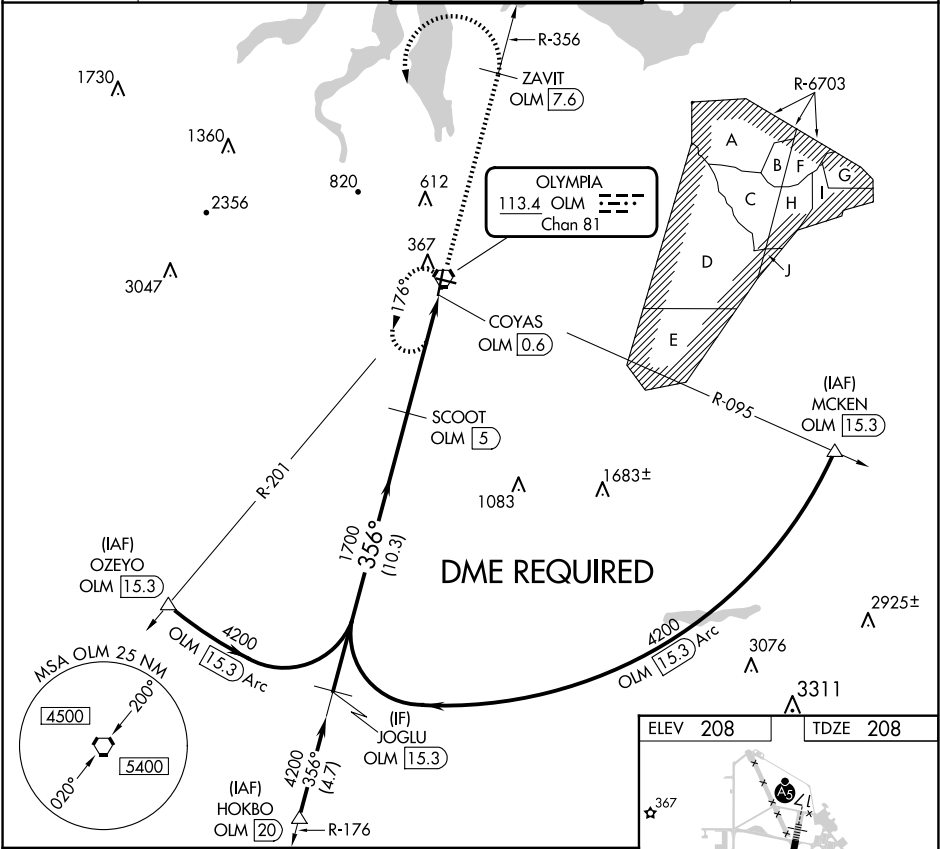
APP CRS	356°
---------	------

VOR RWY 35
OLYMPIA RGNL (OLM)

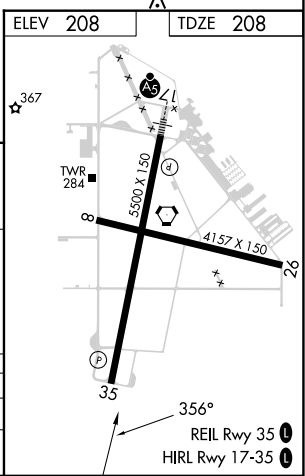
▼ Rwy 35 helicopter visibility reduction below 3/4 SM NA.
▲ DME required.

MISSED APPROACH: Climb to 4000 on OLM VORTAC
R-356 to ZAVIT/OLM 7.6 DME then climbing left turn
direct OLM VORTAC and hold.

ATIS 135.725	SEATTLE APP CON 121.1 290.9	OLYMPIA TOWER* 124.4 (CTAF) 254.25	GND CON 121.6	UNICOM 122.95
-----------------	--------------------------------	---------------------------------------	------------------	------------------



	JOGLU OLM 15.3	SCOOT OLM 5	4000	ZAVIT OLM 7.6	OLM
	4200	356°	1700	OLM 2.5	OLM VORTAC
		3.13° TCH 50		COYAS OLM 0.6	
	10.3 NM	2.5 NM	1.8 NM		
CATEGORY	A	B	C	D	
5-35	840-1	632 (700-1)	840-1 3/4	632 (700-1 3/4)	
CIRCLING	840-1 632 (700-1)	860-1 652 (700-1)	1020-2 1/2 812 (900-2 1/2)	1020-2 3/4 812 (900-2 3/4)	



NW-1, 07 AUG 2025 to 04 SEP 2025

NW-1, 07 AUG 2025 to 04 SEP 2025