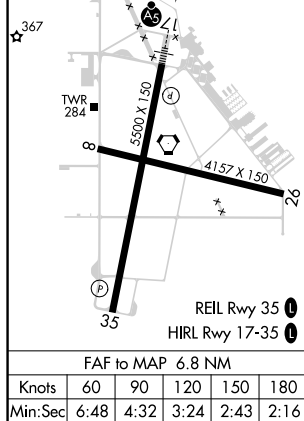
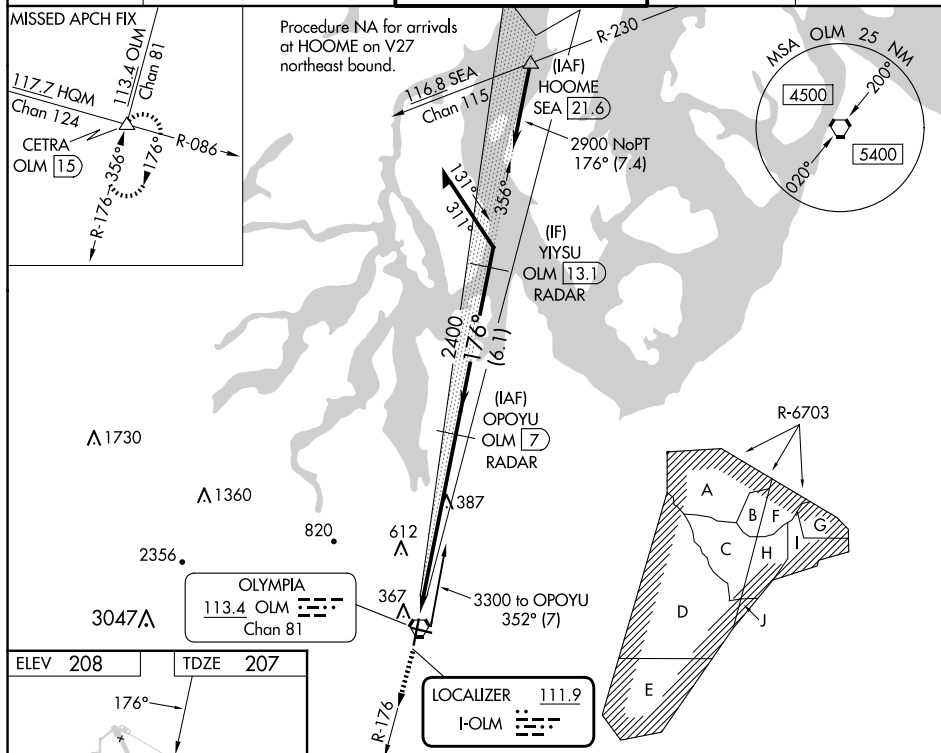


LOC I-OLM 111.9	APP CRS 176°	Rwy Idg 5500 TDZE 207 Apt Elev 208
---------------------------	------------------------	---

ILS or LOC RWY 17
OLYMPIA RGNL (OLM)

	<p>DME or RADAR required. For inop ALS, increase S-LOC 17 Cat C/D visibility to 1½ SM.</p>	<p>MALSR</p>	<p>MISSED APPROACH: Climb to 1400 then climb to 5500 on OLM VORTAC R-176 to CETRA INT/OLM 15 DME and hold, continue climb-in-hold to 5500.</p>
--	--	--------------	--

ATIS 135.725	SEATTLE APP CON 121.1 290.9	OLYMPIA TOWER★ 124.4 (CTAF) 0 254.25	GND CON 121.6	UNICOM 122.95
-----------------	--------------------------------	---	------------------	------------------



1400 ↑	5500 ↑ OLM R-176	CETRA △	OPOYU OLM (7) RADAR	3300	2400	2900	2400	GS 3.00° TCH 53
OLM (0.3)		6.8 NM		356°		176°		
CATEGORY	A	B	C	D				
S-ILS 17	407-½ 200 (200-½)							
S-LOC 17	680-½ 473 (500-½)			680-1 473 (500-1)				
CIRCLING	720-1 512 (600-1)	860-1 652 (700-1)	1020-2½ 812 (900-2½)	1020-2¾ 812 (900-2¾)				