

WAAS CH 60938 W05A	APP CRS 054°	Rwy Idg TDZE 70 Apt Elev 79
--	------------------------	---

RNAV (GPS) RWY 5

NEW BEDFORD RGNL (EWB)

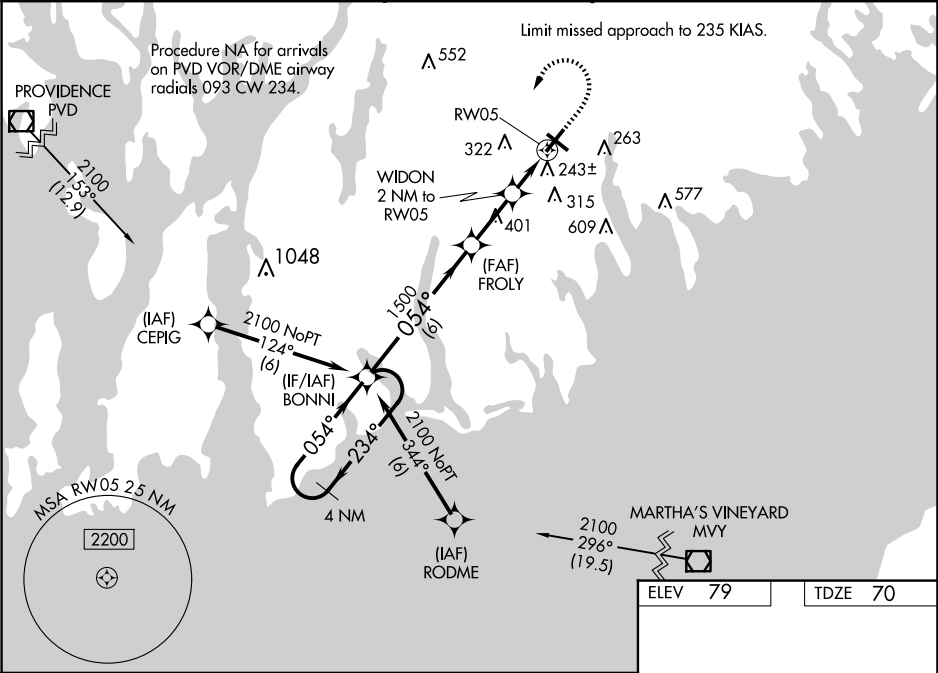
RNP APCH-GPS.

▼ Baro-VNAV and VDP NA when using Taunton altimeter setting. For uncompensated Baro-VNAV systems, LNAV/VNAV NA below -16°C or above 54°C. When local altimeter setting not received, use Taunton altimeter setting and increase LPV DA to 304 feet, increase LNAV/VNAV DA to 487 feet and all visibilities to RVR 5000; increase all MDA 40 feet and LNAV Cats C/D visibility to RVR 5000. For inop MALSR, when using Taunton altimeter setting, increase LPV all Cats visibility to RVR 4500, LNAV/VNAV all Cats and LNAV Cat C/D visibility to 1½ miles. ** RVR 1800 authorized with use of FD or AP or HUD to DA, NA when using Taunton altimeter setting.

MALSR

MISSED APPROACH:
Climb to 700 then climbing left turn to 2100 direct BONNI and hold.

ATIS 126.85	PROVIDENCE APP CON* 128.7 269,525	NEW BEDFORD TOWER* 118.1 (CTAF) 0 239.0	GND CON 121.9	UNICOM 122.95
-----------------------	---	---	-------------------------	-------------------------



4 NM Holding Pattern

BONNI

FROLY

WIDON 2 NM to RW05

*1.2 NM to RW05

RW05

700

2100

BONNI

*LNAV only.

GP 3.00° TCH 49

2100

234°

054°

054°

1500

740

6 NM

2.4 NM

0.8

1.2

CATEGORY	A	B	C	D
LPV DA **		270/24	200 (200-½)	
LNAV/VNAV DA		453/45	383 (400-¾)	
LNAV MDA	500/24	430 (500-½)	500/40	430 (500-¾)
CIRCLING	620-1 541 (600-1)	640-1 561 (600-1)	720-1¾ 641 (700-1¾)	960-3 881 (900-3)

MIRL Rwy 14-32

HIRL Rwy 5-23

REIL Rwy 32

TWR 126

5400 X150

5002 X75

0.3% Up

054°