

WAAS
CH 42914
W31A

APP CRS
308°

Rwy Ldg
6901
TDZE
1301
Apt Elev
1302

RNAV (GPS) RWY 31
ABERDEEN RGNL (ABR)

RNP APCH - GPS.
For uncompensated Baro-VNAV systems, LNAV/VNAV NA below -17°C or above 54°C. For inop ALS, increase LNAV/VNAV visibility all Cats to ¾ SM and LNAV visibility all Cats to 1 SM.

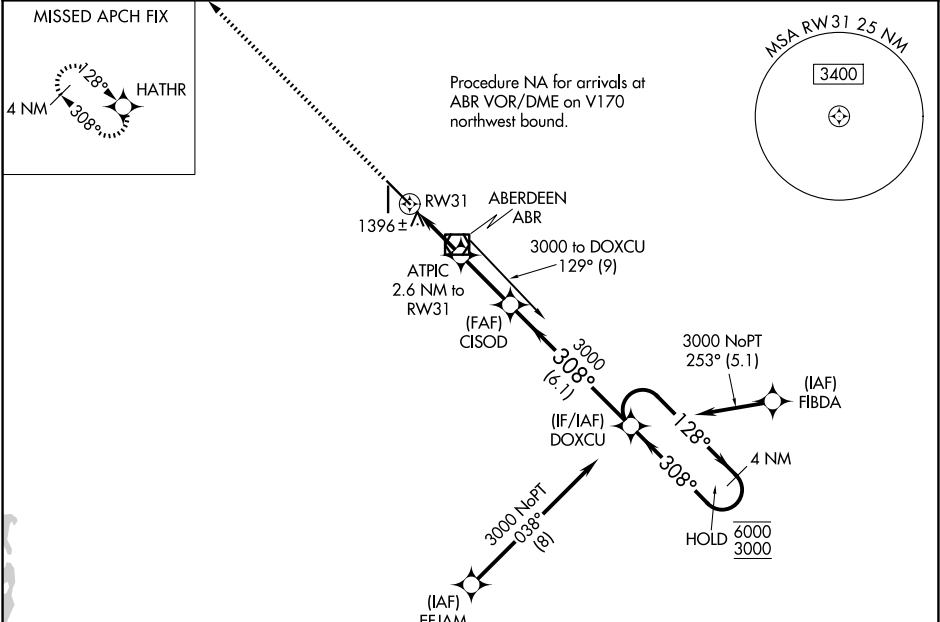
MALSR

MISSED APPROACH: Climb to 3000 direct HATHR and hold.

ASOS
125.875

MINNEAPOLIS CENTER
120.6 371.9

UNICOM
122.7 (CTAF)



ELEV 1302 TDZE 1301

3000 HATHR
VGSI and RNAV glidepath not coincident (VGSI Angle 3.00/TCH 67).
ATPIC 2.6 NM to RW31
CISOD 3000
DOXCU 4 NM Holding Pattern
RW31 0.9 NM to RW31
2180
308°
128°
6000 3000
GP 3.00° TCH 52

CATEGORY	A	B	C	D
LPV DA	1501-½ 200 (200-½)			
LNAV/VNAV DA	1599-½ 298 (300-½)			
LNAV MDA	1660-½ 359 (400-½)	1660-⅝ 359 (400-⅝)		
CIRCLING	1760-1 458 (500-1)	1860-1 558 (600-1)	1960-1¾ 658 (700-1¾)	2160-2¾ 858 (900-2¾)

5500 X 100
35

308°
51°

HIRL Rwy 13-31
MIRL Rwy 17-35
REIL Rws 13, 17 and 35