

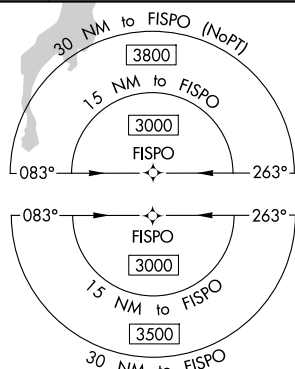
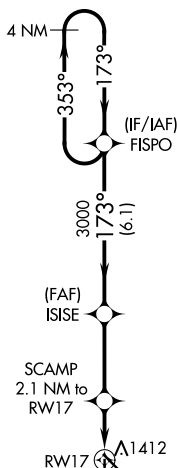
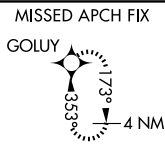
WAAS CH 56340 W17A	APP CRS 173°	Rwy Ldg 5500 TDZE 1302 Apt Elev 1302
--	------------------------	---

RNAV (GPS) RWY 17
ABERDEEN RGNL (ABR)

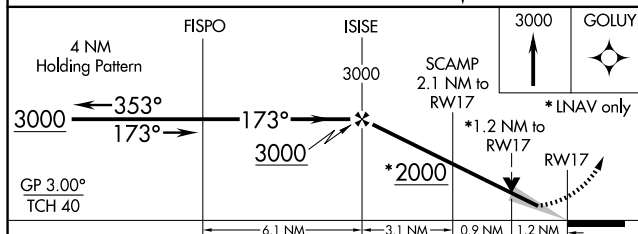
T For uncompensated Baro-VNAV systems, LNAV/VNAV
A NA below -22°C (-7°F) or above 54°C (130°F).
DME/DME RNP-0.3 NA.

MISSED APPROACH: Climb to 3000 direct GOLUY and hold.

ASOS 125.875	MINNEAPOLIS CENTER 120.6 371.9	UNICOM 122.7 (CTAF) ①
------------------------	--	---------------------------------



NC-1, 07 AUG 2025 to 04 SEP 2025



CATEGORY	A	B	C	D
LPV DA	1502- $\frac{3}{4}$ 200 (200- $\frac{3}{4}$)			
LNAV/VNAV DA	1624-1 $\frac{1}{8}$ 322 (400-1 $\frac{1}{8}$)			
LNAV MDA	1720-1	418 (500-1)	1720-1 $\frac{1}{8}$	418 (500-1 $\frac{1}{8}$)
CIRCLING	1760-1 458 (500-1)	1860-1 558 (600-1)	1960-1 $\frac{3}{4}$ 658 (700-1 $\frac{3}{4}$)	2160-2 $\frac{3}{4}$ 858 (900-2 $\frac{3}{4}$)

