

APP CRS  
300°

Rwy Ldg	<b>7000</b>
TDZE	<b>1232</b>
Apt Elev	<b>1249</b>

RNAV (RNP) Z RWY 30  
PANGBORN MEML (EAT)

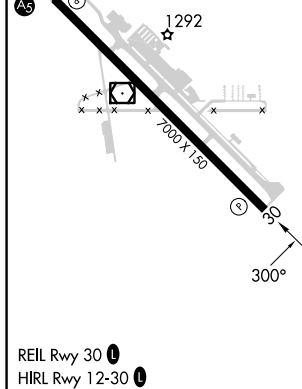
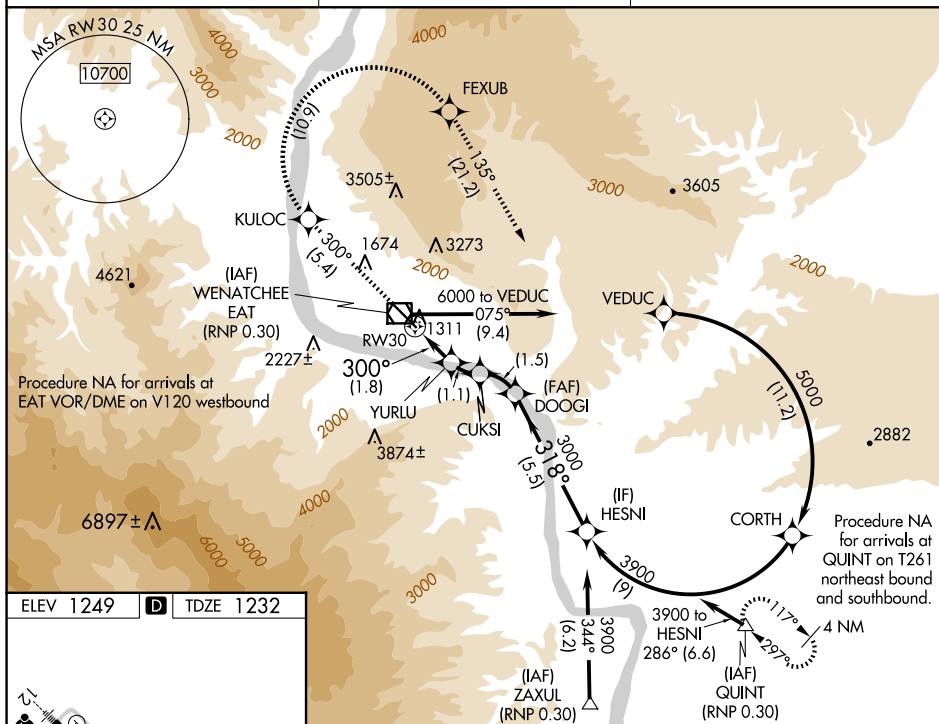
**T**  
**-7°C**

For uncompensated Baro-VNAV systems, procedure NA below -10°C (14°F) or above 44°C (111°F). RF required. GPS required. FD or HUD required.

**MISSED APPROACH:** Climb to 6000 on track 300° to KULOC, right turn to FEXUB, and on track 135° to QUINT and hold.  
 \*Missed approach requires minimum climb of 320 feet per NM to 5500.  
 ‡Missed approach requires minimum climb of 325 feet per NM to 5500.

ASOS  
119.925

SEATTLE CENTER  
126.1

UNICOM  
123.0 (CTAF) **L**

6000 ↑ tr 300°	KULOC ✱	FEXUB ✱	tr 135° △	QUINT	
VGS1 and RNAV glidepath not coincident (VGS1 Angle 4.30/TCH 46).					DOOGI
RW30 YURLU 1979 CUKSI 2411 3000 318° 3900 GP 3.60° TCH 60					HESNI
1.8 NM 1.1 NM 1.5 NM 5.5 NM					
CATEGORY	A	B	C	D	
RNP 0.17 DA*	1595-1	363 (400-1)		NA	
RNP 0.30 DA#	1686-1 <sup>3</sup> / <sub>8</sub>	454 (500-1 <sup>3</sup> / <sub>8</sub> )		NA	
AUTHORIZATION REQUIRED					